



Sherburne
Soil and Water Conservation District

Sherburne County AIS Prevention Program

2022 Spring Meeting

May 23, 2022

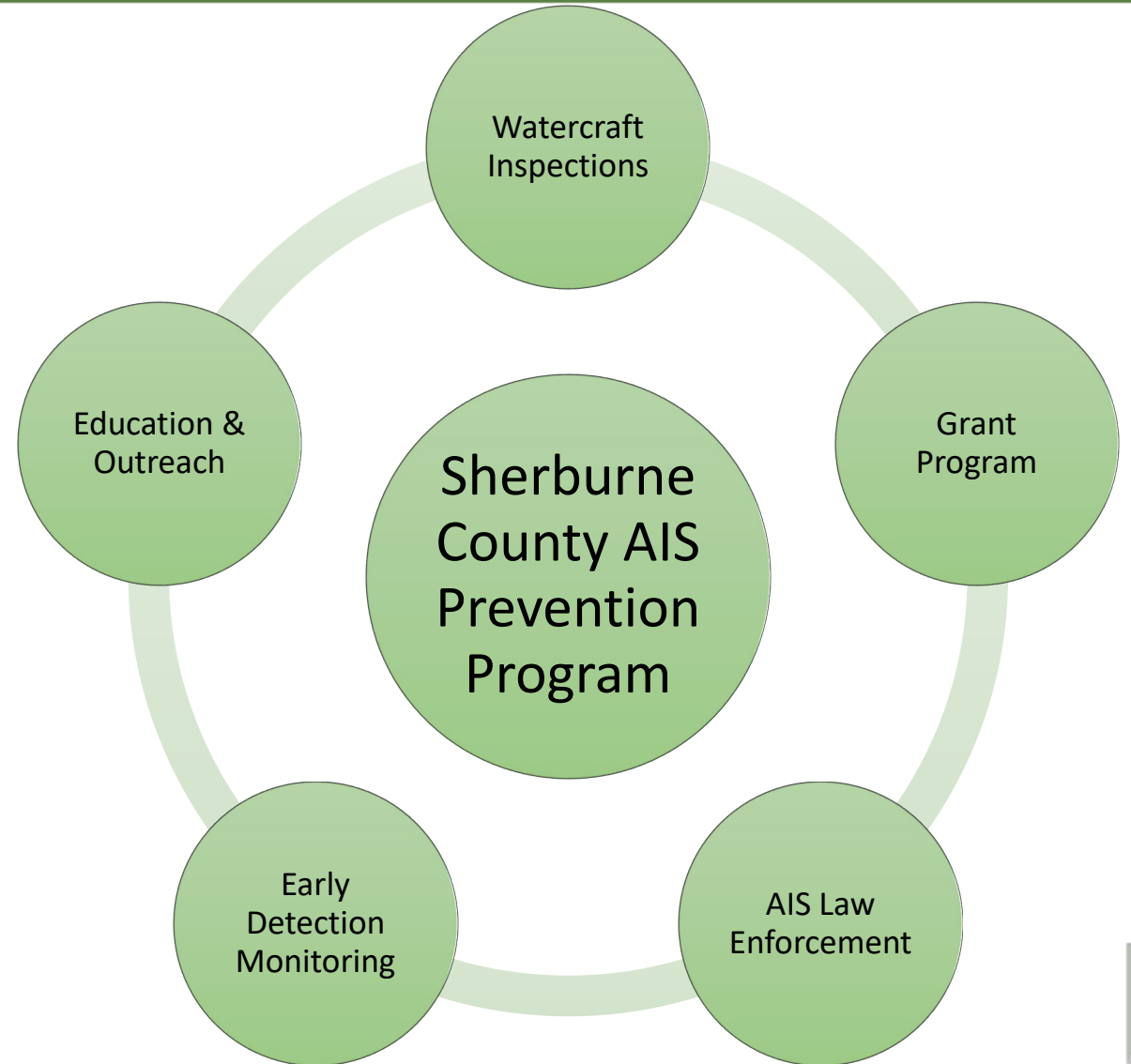
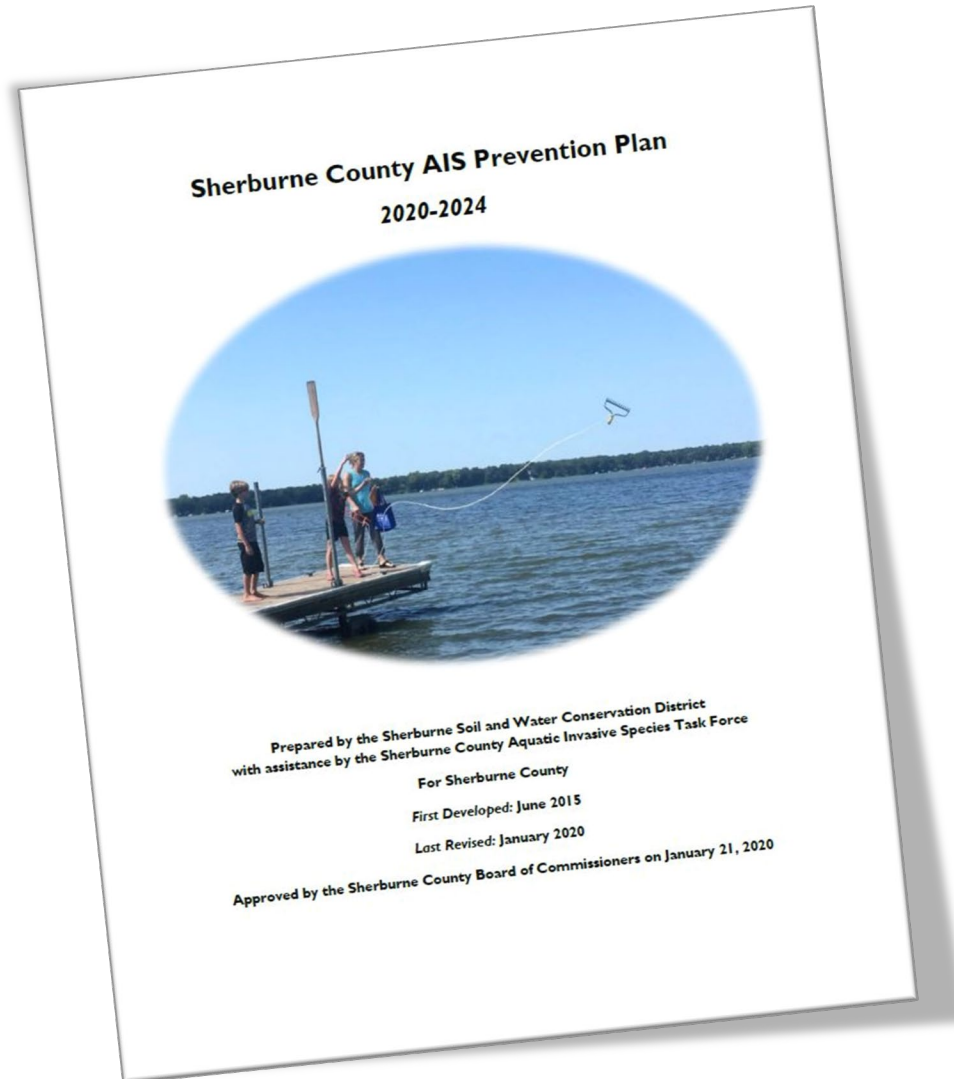


Welcome and Agenda Review

Time	Item
5:30 – 5:40	Introductions
5:40 – 6:00	Preparation for 2022 Open Water Season <ul style="list-style-type: none"> • Watercraft Inspections • Early Detection Activities • New infestations and Follow-up
6:00 – 7:00	Featured Speaker – Julia Bohnen Julia is an instructor and researcher with the Department of Fisheries, Wildlife and Conservation Biology at the University of Minnesota. Julia's work includes both research and teaching related to ecological restoration and invasive species management. She will be speaking about non-native <i>Phragmites australis</i> (common reed, a tall growing plant that occupies wet soils such as the lake or pond shorelines, wetlands, ditches, and other wet areas. Julia's presentation will cover how to identify phragmites, the current outlook of this plant across the region, and descriptions of phragmites programs that are ongoing.
7:00 – 7:30	Open Forum Optional opportunity for participants to share a story or update about AIS activities they have been involved with. What is a new AIS fact you learned? What is something related to AIS you observed recently? What is an AIS project that you have worked on, or would like to work on?
7:30	Adjourn



2022 AIS Activities





2022 AIS Grant Program

Applicant	Project Type	Description
Big Eagle Lake Improvement Association	AIS Planning	EWM and CLP surveys
Orono Lake Improvement District	AIS Planning	Lake vegetation surveys
Three Lakes Improvement District	AIS Management	Purple loosestrife delineation and hand-removal
City of Princeton	AIS Management	Phragmites treatment
Little Elk Lake Improvement Association	AIS Management	CLP treatment
Big Eagle Lake Improvement Association	AIS Management	CLP treatment
Birch Lake Association	AIS Management	EWM treatment
Ann Lake Improvement Club	AIS Management	CLP treatment
Big Lake Community Lakes Association	AIS Volunteer	100 hours volunteer outreach
Big Eagle Lake Improvement Association	AIS Volunteer	75 hours volunteer outreach
Ann Lake Improvement Club	AIS Volunteer	50 hours volunteer outreach

2022 AIS Project Total Costs: \$47,486.45

2022 Grant Awards: \$17,887.50

2022 Local Funds Leveraged: \$29,598.95

DNR Grant Recipients

- Briggs Chain Lake Association (AIS Control)
- Orono Lake Improvement District (AIS Management)



2022 Watercraft Inspection Program

Level 1 Inspections

- Focus remains on targeting public accesses on a random and rotating basis
- Hours allocated based upon three factors:
 1. MAISRC prioritization ranking index
 2. Public access traffic (high, medium, low)
 3. Current AIS infestation



	Lake	Lake ID	Hours
Other County Lakes	Big	710082	110
	Eagle	710067	75
	Little Elk	710055	75
	Orono	710013	100
	Ann	710069	45
	Birch	710057	55
Briggs Chain of Lakes	Briggs	710146	147
	Big Elk	710141	80
	Julia	710145	131
	Rush	710147	147
Total			965

Briggs Chain Lake Association and Three Lakes Improvement District contributing an extra 300 hours towards Briggs Chain Lakes



2022 AIS Enforcement

Sherburne County Water Patrol

- Existing partnership began in 2016
- ~60 holiday & fishing opener hours anticipated to engage the public on AIS and water safety.

Sheriff's Office – 2022 Anticipated AIS Enforcement Coverage

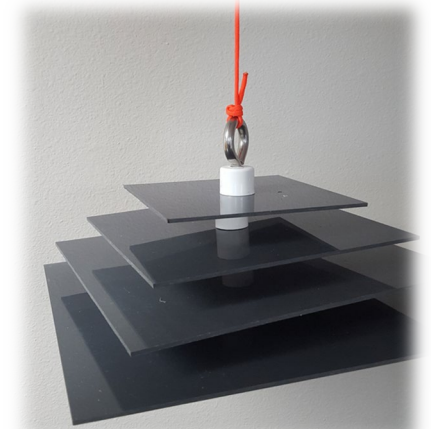

Fishing Opener	May 14 & May 15
Memorial Day	May 28, 29 and 30
Independence Day	July 2, 3, 4
Labor Day	Sept 5



2022 Early Detection Monitoring

2022 AIS Early Detection Programs

- Widespread settling plate monitoring
- Dock/life fall monitoring program
- Rapid Response veliger netting, eDNA monitoring as needed
- Promotion of AIS Detectors program
- Promotion and utilization of new AIS EDRR protocols
- Golden Clam monitoring
- 2022 Starry Trek

SC COLA
Sherburne County
Coalition Of
Lake Associations

**Aquatic Invasive
Species (AIS)
Early Detection
Rapid Response**

AIS ACTION TEAM

Once notified of finding by AIS Evaluation Team:

- 1 Understand & communicate extent of problem**
 - Create map of known infestation area, following DNR protocol for each species:
 - Plants
 - Zebra mussels
 - Other species
 - Develop communication document using case study examples
 - Share the new DNR infestation notice with lake association(s) and those downstream, SC COLA and the general public
- 2 Risk assessment & management option evaluation**
 - AIS Evaluation Team participation and assistance throughout as needed
- 3 Management action implementation**
 - Acquire necessary permits
 - Coordinate treatment or remediation
 - Identify needs for follow-up monitoring (may be multi-year)
- 4 Develop long-term strategy**
 - Create and implement an education program to help manage existing and prevent future AIS infestations

Art ©2021 CDP Art & Design



2022 Educational Activities

Increased Social Media presence

- Sponsorship of MN Traditions (created by Mississippi Headwaters Board)
 - *Visit and subscribe! www.minnesotatraditions.com*
- Look for videos on the SWCD YouTube & Facebook channel this summer!

Continued support and promotion of MAISRC and MN DNR education events

- MN DNR notices and outreach materials
- Starry Trek
- MAISRC Research Symposium
- MAISRC courses (AIS Mgmt 101, AIS Detectors)
- MN DNR and MAISRC plant identification workshops



The SWCD is always looking for more outreach opportunities – contact us with your thoughts, ideas, and opportunities!



2022 Special Projects

Golden Clam (Briggs Lake, Big Lake)

- USGS Upper Midwest Environmental Sciences Center research proposal, “*Understanding the invasive potential of Corbicula fluminea in Minnesota waterbodies*”
 - Develop and implement eDNA detection tools for golden clam
 - Identify environmental factors / tolerances that determine population establishment
 - Determine effects of pesticides / herbicides and potential for limiting golden clam populations
 - Project not funded for 2022.
- SWCD will visit Briggs and Big Lakes in 2022 to assess population.
- Volunteer work will continue to drive new observations.



2022 Special Projects

Carp Management (Eagle Lake)

- Past research indicates approximately 3,394 carp in system, contributing ~360 lbs of nutrients to lake
- Fall 2021 – surveys and radio tag installation
- Winter 2021/2022 – telemetry
- Spring 2022 – telemetry and spawning map determination
- Future management – may include netting and spawning exclusion tactics





Phragmites australis



Thank you!

AIS Resources

MN DNR AIS Programs: <https://www.dnr.state.mn.us/invasives/ais/index.html>

Minnesota AIS Research Center: <https://www.maisrc.umn.edu/>

Minnesota Sea Grant: <https://seagrant.umn.edu/>

Sherburne SWCD AIS Program: <https://www.sherburneswcd.org/aquatic-invasive-species-ais.html>

University of Minnesota Extension: <https://extension.umn.edu/>