

Appendix A: Priority Concerns Scoping Document

**Sherburne County Local Water Management
Plan Update**

Priority Concerns Scoping Document

October 2016



Restored shoreline along Lake Orono, City of Elk River

Prepared by:

Sherburne Soil and Water Conservation District

Along with partners:

Sherburne County Water Plan Advisory Committee

Sherburne County Zoning Department

For more information contact:

Dan Cibulka

Sherburne SWCD Water Resource Specialist

761-567-5369

dcibulka@sherburneswcd.org

1. Introduction

The Priority Concerns Scoping Document (PCSD) serves to introduce and summarize Sherburne County’s priority water resource concerns, which are proposed to be included in the upcoming revised Sherburne County Water Plan. This plan is anticipated to be completed in 2018 and would serve to guide planners in managing the local water resources for a period of 10 years. The content that follows is a summary of the county’s proposed priority concerns, as determined by local stakeholders through numerous communication and outreach efforts.

Population Trends and Land Use

Sherburne County consists of a 451 square mile (1,168 square kilometer) region lying within east-central Minnesota (Figure 1). The county seat of Elk River is located roughly 35-40 miles from the twin cities of Minneapolis and St. Paul. Major population centers include Elk River, Becker, Big Lake, Princeton (partly in Mille Lacs County), St. Cloud (partly in Stearns County) and Zimmerman. The county has incurred steady growth from 1980-2015, increasing at an average rate of nearly 390 individuals per year. The Minnesota Department of Administration anticipates continued future growth within Sherburne County, however at a decreased rate from what has been experienced in previous years (Figure 2).

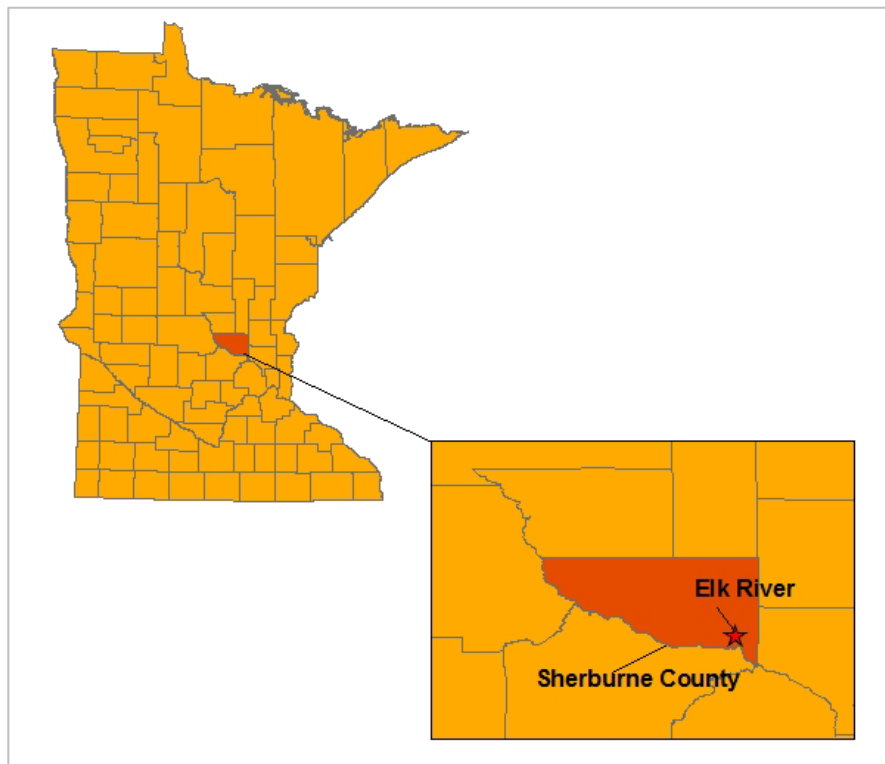


Figure 1: Sherburne County extent and county seat location (Elk River).

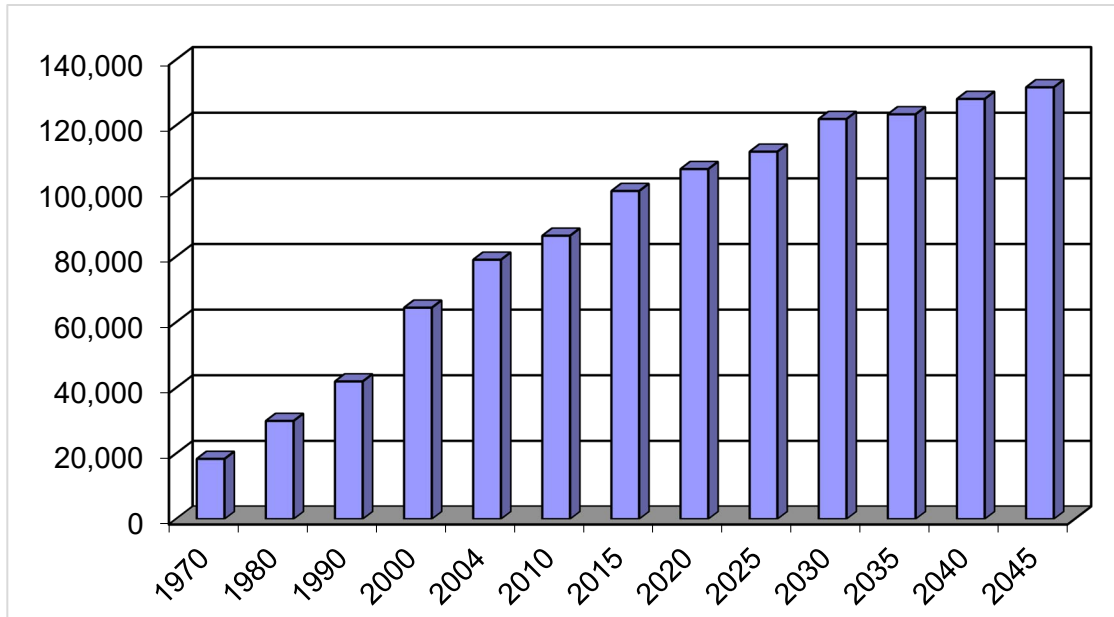


Figure 2: Sherburne County Population Estimates and Trends. Data provided by Sherburne County Auditor / Treasurer Department (1970-2004) and Minnesota Department of Administration State Demographic Center (2010-2045).

Sherburne County incorporates portions of two major watersheds within its political boundaries, the Mississippi River – St. Cloud Watershed and Rum River Watershed. The watersheds contain predominately agricultural land use (29%), however vast areas of forest (24%), pasture / grass (21%), and wetlands (19%) exist (Figure 3). Much of this natural land is located within the Sherburne National Wildlife Refuge along with the neighboring Sand Dunes State Forest. As the population of Sherburne County continues to grow, it is anticipated that rural residential and urban developments will slowly replace portions of agricultural land.

Sherburne County is comprised primarily of sandy soils, consisting of outwash sands from retreating glaciers and also wind-blown sands. These materials were deposited during the last glacial stage of the Pleistocene epoch (Wisconsin stage). The sandy soils make for high infiltration rates in most areas of the county. These soils are beneficial in some ways; for example, they can be effective at retaining surface water through infiltration into the groundwater table. However sandy soils need to be managed carefully, particularly in agricultural regions, due to the potential for leaching losses of nitrate.

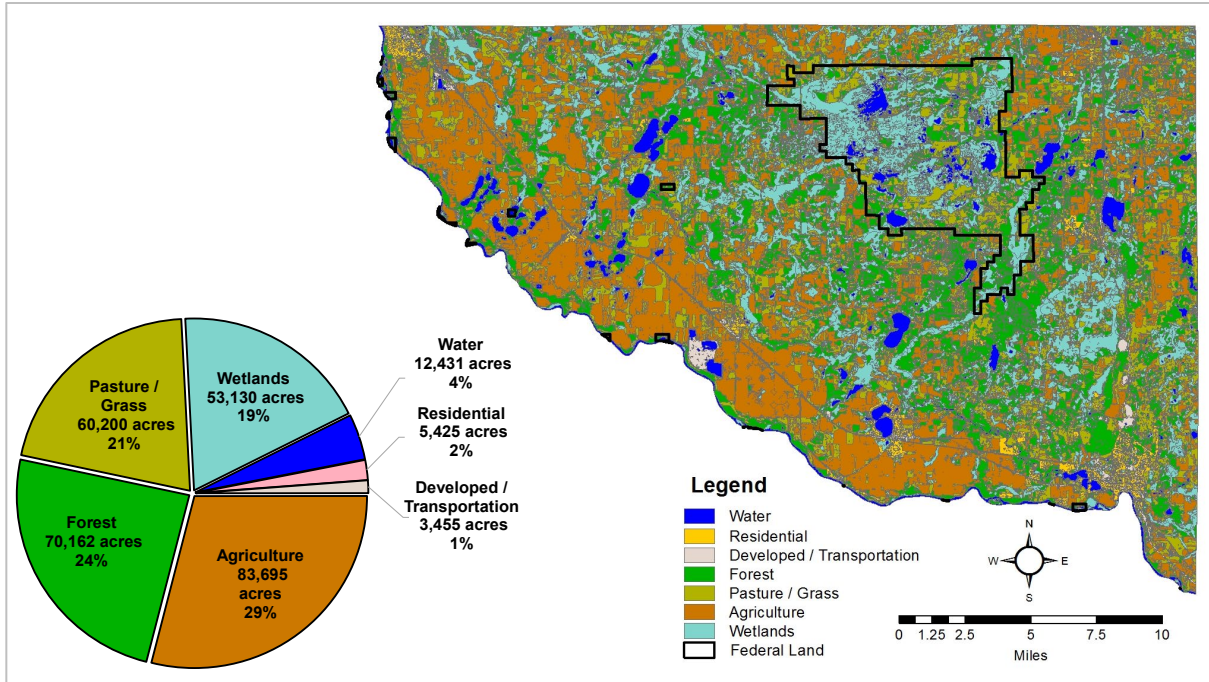


Figure 3: Sherburne County Land Use. Land use compiled by National Land Cover Database (www.mrlc.gov/nlcd2011.php - 2011).

Water Plan Information

The Sherburne Soil and Water Conservation District (SWCD) is the local water planning authority for Sherburne County. However, water resource management is shared by a number of partners including the Sherburne County Zoning Department as well as a Water Plan Advisory Committee that consists of representatives from townships, cities, natural resource agencies, county staff and citizens.

The original Sherburne County Local Water Management Plan was adopted in 1992. Since then, the plan was updated in 1995, 2001, and 2007. The 2007 plan was amended in 2012 and included an expiration date of 2017. In fall of 2015, Sherburne SWCD applied for an extension in order to accommodate staff transitions. This extension was approved by the BWSR (Board of Water and Soil Resources) in May of 2016, and the new plan expiration date was determined to be February 2018.

2. Proposed Priority Concerns

During a 9/22/2015 committee meeting and public open house, the Sherburne County Water Plan Advisory Committee reviewed public and agency comments regarding local water resource matters. From this review, the following priority concerns were selected for the upcoming water plan update:

4. Surface Water Quality:
 “Cumulative impacts of land use in directly connected and/or riparian areas which have a direct impact on surface water quality.”

5. Ground Water Quality and Quantity:
 “High levels of nitrates in groundwater and quantity in areas identified as sensitive.”

6. Aquatic Invasive Species:

“Introduction and spread of aquatic invasive species and their negative effect on water quality, navigation, recreation and fisheries.”

3. Priority Concerns Identification Process

To determine Sherburne County’s priority concerns, input was solicited from numerous stakeholder groups, including both the public and local and state agencies. These stakeholders were approached for input through formal meetings, a survey which was distributed in online and hardcopy formats, a public open house forum, and directed questions posed to local LGU’s and state agencies. Key input opportunities are summarized in Table 1 below.

Table 1: Priority Concerns Public Discussion and Input Summary. Documentation of events presented in Appendices.

Date	Stakeholders / Participants	Description	Documentation
7/7/2015	County Board	Resolution to Update Plan	Appendix B - Water Plan Resolution
7/21/2015	Water Plan Advisory Committee	Committee Meeting: discussion on water plan and outline of water plan process.	Appendix B - 07-21-2015 WPAC Meeting Minutes
7/22/15 - 9/4/15	General Public and Local Governmental Units	Public Input Survey: a survey was provided to the general public and LGU's through an online platform and hard-copy handout. The survey was advertised through numerous avenues, including posting the online version weblink on lake association and city websites, adding notice to local newspapers, and handing out hard-copies at the Sherburne County Fair.	Appendix C - Public Input Survey
8/20/2015	SWCD Staff	Staff Meeting: discussion held on priority concerns and identification of threats to county water resources.	Appendix B - SWCD Staff Meeting Notes
7/22/15 - 9/4/15	State agencies	Input from five state agencies on the priority concerns	Appendix D - State Agency Input
9/22/2015	Public	Public Open House held during Water Plan Advisory Committee Meeting.	Appendix B - 09-22-2015 WPAC Meeting Minutes
9/22/2015	Water Plan Advisory Committee	Committee Meeting: discussion on water plan priorities, including data gathered during public process, identification of priority concerns.	Appendix B - 09-22-2015 WPAC Meeting Minutes
1/26/2016	Water Plan Advisory Committee	Committee Meeting: a comment period was held on the three identified priority concerns. Committee agreed to move forward with the priorities and create the Priority Concerns Scoping Document.	Appendix B - 01-26-2016 WPAC Meeting Minutes

4. Priority Concerns Selection Process

The Water Plan Advisory Committee examined all input and topics presented within the aforementioned input opportunities, including those received in written format (survey) and conversations held amongst stakeholders. No comments were provided by the general public during the 9/22/2015 Public Open House. During an 8/20/2015 Sherburne SWCD staff meeting, input was compiled into an all-encompassing list of threats or challenges to county waterways (Table 2). These topics were combined into general impact categories of surface water, groundwater resources, wetlands, and aquatic invasive species. This assisted Sherburne SWCD staff in narrowing the list of many topics to three topics that are better defined and represent the majority of the comments and input received. The three topics determined through this process address many of the sub topics described within Table 2 and are representative of the majority of stakeholder concerns.

Table 2: Compiled water resource summary list. Issues determined through feedback from general public and LGU during priority concern determination process, 2015.

Specific Issue	Impact Category
Prevent AIS spread	Aquatic Invasive Species
Nitrogen movement in soil	Groundwater
Erosion	Surface Water
Pesticides / Herbicides	Groundwater, Surface Water
Groundwater contamination	Groundwater
Septic system regulations	Groundwater
Groundwater quantity	Groundwater
Reduce flooding	Groundwater , Surface Water, Wetlands
Contaminated runoff (all)	Surface Water
Agricultural runoff	Surface Water
Decreasing native shoreline vegetation	Surface Water, Aquatic Invasive Species
Land use development	Surface Water, Wetlands
Manage stormwater in existing developments	Surface Water, Wetlands
Impervious Surfaces	Surface Water, Wetlands
Decreasing native vegetation	Surface Water, Wetlands, Aquatic Invasive Species

The current PCSD and/or water plan for numerous neighboring counties were reviewed to determine similarities and differences to the priority concerns identified by the Sherburne County Water Plan Advisory Committee. The following county documents were reviewed:

- Benton County
- Mille Lacs County
- Stearns County
- Wright County
- Chisago County
- Isanti County

Surface water quality and groundwater quantity and quality issues are identified within neighboring Isanti, Benton, Wright, Mille Lacs, Chisago and Stearns County PCSDs and Water Plans. At the state level, Minnesota has prioritized surface water quality through numerous ways, including the recently enacted Buffer Law (Chp. 85 S.F. 2503) which is intended to filter nutrients and sediment from surface water runoff and reduce soil erosion. As groundwater supplies roughly 75% of the state’s drinking water and 90% of agricultural irrigation demands, Minnesota has prioritized this issue as well. The MDNR’s Groundwater Management Program was updated in 2013 to meet new challenges and demands and includes an objective to “heighten the priority given to groundwater management”.

Sherburne County's third priority concern, aquatic invasive species, was specifically mentioned within Isanti and Chisago County's most recent PCSDs. AIS is an emerging issue that may have not been captured in older county water plans. Sherburne County would like to take a proactive role in reducing the transport of AIS into county waters, while containing and strategically managing current infestations. AIS is an issue largely acknowledged at the state level, with programs being coordinated in categories of education and public awareness, inspection and enforcement, research, and management / control. During fiscal year 2015, expenditures at the state level totaled \$10,509,000.

5. Other Concerns

A single sub-topic that was mentioned in stakeholder comments briefly, flooding, was considered by the Sherburne County Water Plan Advisory Committee but ultimately was not represented further in the priority concern selection process. Although flooding can be an issue in Sherburne County, it was determined that this concern would be better implemented in a plan that addresses upstream waters (Benton County). The Water Plan Advisory Committee discussed an approach towards addressing this issue, which would center on deeper discussions with Benton County representatives and to form a collaborative working group during the Benton County Water Plan update. Further, it is anticipated that as Benton and Sherburne County implement water resource Best Management Practices for the purposes of water quality restoration and erosion control, flooding matters will be alleviated as an additional outcome.

Priority Concern Scoping Document: Appendix A

Water Plan Advisory Committee - Voting Members

Rick Dahlman

T. Vander Eyk

Melanie Waite-Altringer

Clint Jordahl

John Riebel

Barbara Tucker

Tom Hammer

John Barr

Water Plan Advisory Committee – Advisors

Francine Larson, Sherburne SWCD

Frances Gerde, Sherburne SWCD

Dan Cibulka, Sherburne SWCD

Zach Guttormson, Sherburne County Zoning

Priority Concern Scoping Document: Appendix B

Water Plan Resolution to Update Water Plan

**RESOLUTION TO UPDATE THE SHERBURNE COUNTY
COMPREHENSIVE WATER MANAGEMENT PLAN #070715-AD-1651**

WHEREAS, Minnesota Statutes, Chapter 103B.301, Comprehensive Local Water Management Act, authorizes Minnesota Counties to develop and implement a local water management plan, and

WHEREAS, the Act requires that a county update and revise their local water management plan on a periodic basis, and

WHEREAS, the Act encourages that a county coordinate its planning with contiguous counties, and solicit input from local governmental units and state review agencies, and

WHEREAS, the Act requires that plans and official controls of other local governmental units be consistent with the local water management plan, and

WHEREAS, Sherburne County has determined that the revision and continued implementation of a local water management plan will help promote the health and welfare of the citizens of Sherburne County, and

NOW, THEREFORE, BE IT RESOLVED, that the Sherburne County Board of Commissioners resolve to revise and update its current local water management plan.

BE IT FURTHER RESOLVED that Sherburne County will coordinate its efforts in the revision and update of its plan with all local units of government within the county, and the state review agencies; and will incorporate, where appropriate, any existing plans and rules which have been developed and adopted by watershed entities having jurisdiction wholly or partly within Sherburne County into its local water management plan.

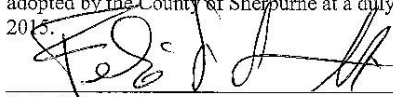
BE IT FURTHER RESOLVED that the Sherburne County Board of Commissioners authorizes the Water Management Advisory Committee with the responsibility of revising and updating the plan and who shall report to the County Board on a periodic basis.

BE IT FURTHER RESOLVED that the Sherburne County Board of Commissioners delegates the Sherburne Soil and Water Conservation District the responsibility of coordinating, assembling, writing and implementing the revised local water management plan pursuant to M.S. 103B.301.

CERTIFICATION

**STATE OF MINNESOTA
COUNTY OF SHERBURNE**

I do hereby certify that the foregoing resolution is a true and correct copy of a resolution presented to and adopted by the County of Sherburne at a duly authorized meeting thereof held on the 7th day of July, 2015.



Felix Schmiesing
Chair of the Board of County Commissioners

SHERBURNE COUNTY
REQUEST FOR BOARD ACTION

Consent r

Requested Board Date: 7/7/2015 Flexibility: <input type="checkbox"/> YES <input checked="" type="checkbox"/> NO	Originating Department: Sherburne SWCD
Agenda Item: Resolution to Update and Revise the Sherburne County Comprehensive Water Management Plan	Presenter: Tiffany Determan, Water Plan Coordinator Francine Larson, Sherburne SWCD Estimated Time: <input checked="" type="checkbox"/> Consent Agenda <input type="checkbox"/> 5 Min. <input type="checkbox"/> 15 Min. <input type="checkbox"/> 30 Min. <input type="checkbox"/> 45 Min. <input type="checkbox"/> 1 Hour
Board Action Requested: <input type="checkbox"/> Information/Review <input checked="" type="checkbox"/> Motion to approve... <input type="checkbox"/> Motion to deny... <input type="checkbox"/> Other <input type="checkbox"/> Budget Change (Please word the motion below as you would like it to appear in the minutes.) Resolution to update and revise the Sherburne County Local Water Management Plan as authorized under MN statutes, Chapter 103B.301, the Comprehensive Local Water Management Act.	
Background: (Attach additional pages if needed) The statute which authorizes County Water Plans requires that the County revise and update their Water Plan every 5 years. The current version expires in February of 2017 and we would like to begin the process this year. The update and revision process will require seeking input from county citizens, cities, townships and organizations through public information meetings and surveys. We will also seek input from the DNR, MPCA, Department of Health and Department of Agriculture. The statute requires that the County Board pass a resolution to revise and update the Water Plan at the beginning of the process.	
Supporting Documents: <input checked="" type="checkbox"/> Attached <input type="checkbox"/> None	
Department Head Signature/Date: <i>Larson</i>	
Administrator's Department Signature/Date: <i>[Signature]</i>	
BOARD ACTION <input checked="" type="checkbox"/> Approved as Requested <input type="checkbox"/> Denied <input type="checkbox"/> Tabled <input type="checkbox"/> Accepted Report <input type="checkbox"/> Other	
Date of Action: <i>7/7/15</i>	
Comments:	
County Administrator's Signature/Date: <i>[Signature]</i> <i>7/7/15</i>	

H:\ADMNDATA\FORMS\RB.A.WPD

020216-AD-1702

**Resolution to Extend the Sherburne County
Comprehensive Local Water Management Plan**

WHEREAS, Minnesota Statutes, §103B.301, Comprehensive Local Water Management Act, authorizes Minnesota Counties to develop and implement a Comprehensive Local Water Management Plan, and

WHEREAS, Sherburne County currently has a state approved Comprehensive Local Water Management Plan that covers the period of February 2007 through February 2017, and

WHEREAS, Sherburne County is currently updating the Comprehensive Local Water Management Plan in accordance with Minnesota Statutes §103B.301, and

WHEREAS, Sherburne County Soil and Water Conservation District recently lost and refilled the Water Plan Coordinator position, and

WHEREAS, priority concerns have been identified and the Priority Concerns Scoping Document has been drafted, and

WHEREAS, Sherburne County assures continued effort toward completion of the Comprehensive Local Water Management Plan update, and

WHEREAS, an extension allows for coordination and synchronization of water management efforts across county boundaries within the Mississippi St. Cloud Watershed, and

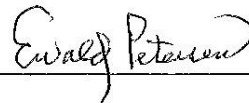
WHEREAS, the Minnesota Board of Water and Soil Resources has authorization to grant extensions pursuant to Minnesota Statutes §103B.3367;

NOW, THEREFORE, BE IT RESOLVED, the Sherburne County Board of Commissioners requests from the Minnesota Board of Water and Soil Resources an extension of the effective date of the current County Comprehensive Local Water Management Plan until February 2018, in order to complete the update process in accordance with Minnesota Statutes §103B.301.

CERTIFICATION

**STATE OF MINNESOTA
COUNTY OF SHERBURNE**

I do hereby certify that the foregoing resolution is a true and correct copy of a resolution presented to and adopted by the County of Sherburne at a duly authorized meeting thereof held on the 2nd of February, 2016.



Ewald Petersen
Chair of the Board of County Commissioners

Water Plan Extension

Minnesota Board of Water and Soil Resources
520 Lafayette Road North
St. Paul, Minnesota 55155

In the Matter of Extending the Comprehensive
Local Water Management Plan for Sherburne
County, pursuant to Minnesota Statutes, Section
103B.3367.

**ORDER
EXTENDING
COMPREHENSIVE
LOCAL WATER
MANAGEMENT PLAN**

Whereas, on May 23, 2007, the Minnesota Board of Water and Soil Resources (Board), by Board Order, approved the Sherburne County Comprehensive Local Water Management Plan (Plan) that is effective until January 31, 2017; and

Whereas, the Board has authorization to grant extensions pursuant to Minnesota Statutes Section 103B.3367; and

Whereas, the Board adopted revised *Local Water Plan Extensions and Amendment Policy* on March 23, 2016;

Now Therefore, the Board hereby makes the following Findings of Fact, Conclusions, and Order:

FINDINGS OF FACT

1. On February 4, 2016, the Board received a petition from Sherburne County requesting an extension to their Comprehensive Local Water Management Plan from the current date of January 31, 2017 until a new date of February 28, 2018. The following are the reasons for the request.
 - A. Sherburne County wishes to synchronize plan development efforts with adjacent counties and local watershed districts to effectively manage the Mississippi River watershed, including the Elk River Watershed, which covers a significant portion of Benton and Sherburne Counties. This coordinated planning between Benton and Sherburne County will serve as the precursor to the development of the most effective One Watershed, One Plan.
 - B. The county has a good history of active watershed management and implementation. However, the former water planner accepted a position with another organization. The SWCD has refilled the water planner position but released this employee and is in the process of refilling this position. The SWCD would like to give the new water planner some additional time to become better versed with the local water resources and partners involved in the county's water management.
2. **Central Regional Committee.** On May 10, 2016, the Central Regional Committee (Committee) of the Board reviewed the Extension request. Those in attendance from the Board's Committee were Paige Winebarger, Jill Crafton, Faye Sleeper, Jack Dittmore, Terry McDill and Joe Collins as chair. Board staff

Water Plan Extension (continued)

in attendance were Central Regional Manager Jim Heartel and Board Conservationists Jason Weinerman and Mary Peterson. Board staff provided its recommendation of approval of the request to the Committee. After discussion, the Committee's voted unanimously to recommend approval of the Extension request to the full Board.

CONCLUSIONS

1. All relevant substantive and procedural requirements of law have been fulfilled.
2. The Board has proper jurisdiction in the matter of extending Comprehensive Local Water Management Plans pursuant to Minnesota Statutes, Section 103B.3367.
3. The Sherburne County extension request is in conformance with the requirements of Minnesota Statutes, Section 103B.3367 and the Board's *Local Water Plan Extensions and Amendment Policy* dated March 23, 2016.

ORDER

The Board hereby approves the extension of the Sherburne County Comprehensive Local Water Management Plan until February 28, 2018.

Dated at Saint Paul, Minnesota, this 25 of May, 2016.

MINNESOTA BOARD OF WATER AND SOIL RESOURCES


BY: Brian Napstad, Chair

07-21-2015 Water Plan Advisory Committee Meeting Minutes

**Minutes
Sherburne County Water Plan Advisory Committee Meeting
July 21st, 2014
Becker Community Center**

Member in Attendance: Clint Jordahl, Barb Tucker, Melanie Waite-Altringer, John Riebel, Doug Hipsag, T. Vander Eyk, Rick Dahlman

Advisors in Attendance: Tiffany Determan, Sherburne SWCD; Frances Gerde, Sherburne SWCD; Francine Larson, Sherburne SWCD; Zach Guttormson, Sherburne County Zoning

Barb Tucker called the meeting to order at 5:02 p.m.

1. **Negotiate/Approve Agenda.** No changes were made to the agenda.
2. **Announcements/General Discussion.**
 - a. SWCD Updates
 - i. **Stormwater Workshop.** Tiffany stated the next workshop would take place in the spring of 2016 and will focus on MS4 requirements.
 - ii. **CWF Grants.** The Briggs Lake Chain community partners grant is moving forward with its focus on the Cedar Point area. Several projects have been designed in the small area to capture and filter runoff before it enters the lake. Tiffany is also working with Big Lake Township on a similar grant that will be focused around Birch Lake.
 - iii. **Community Harvest Party.** Melanie passed around a handout for an event she is coordinating at the Anoka-Ramsey Community College campus in Cambridge on August 6th.
 - b. Member Announcements
3. **Water Plan Update**
 - a. The Water Plan expires February 2017. Tiffany presented a power point describing the importance behind the water plan in the county.
 - b. Steps for Water Plan Update
 - i. Initiation and Gather Data
 - ii. Priority Concern Scoping Document
 - iii. Plan Development
 - iv. Public Hearing and Final Plan Approval
 - c. Ideas for getting public input on the update
 - i. Surveys (handouts and online)
 1. E-newsletters, Facebook, lake association websites, city websites, home owners association websites, County website, Utilities mailings
 2. Provide an incentive such as a free bundle of trees from the SWCD tree sale
 - d. Sherburne Water Quality Priority Concerns
 - i. Small hobby farms adjacent to surface water and manure piles leaching
 1. Soil erosion and compaction
 - ii. Irrigation
 - iii. Urban and rural lawn care maintenance and chemical use
 - iv. County ditches with old tile
 - v. Outdated septic systems

07-21-2015 Water Plan Advisory Committee Meeting Minutes (continued)

Sherburne County Water Plan Advisory Committee
July 21st, 2015

Page 2

- vi.** Shoreline restoration
- vii.** Land use changes
- viii.** Soil erosion – wind and water
- ix.** Education
- x.** Groundwater quality
- xi.** AIS
- xii.** Protecting healthy surface water
- xiii.** Retrofit public and private boat accesses

The next meeting is scheduled for September 22nd, 2015 at the Becker Community Center from 5-7 p.m.

Meeting was adjourned by Barb Tucker at 6:56 p.m.

Submitted by,
Frances Gerde, Sherburne SWCD

08-20-2015 SWCD Staff Meeting Notes

8/20/2015 Water Plan Update Meeting Notes

	Groundwater	Surface Water	Wetlands
Threats	<ul style="list-style-type: none"> - Quantity <ul style="list-style-type: none"> ▪ Over use (turf/ag irrigation) ▪ Lack of recharge due to increase in impervious surfaces - Nitrates - Neonicotinoids in soils - Septic systems 	<ul style="list-style-type: none"> - Nutrients <ul style="list-style-type: none"> ▪ Septic systems ▪ Runoff from ag lands and residential -Neonicotinoids <ul style="list-style-type: none"> ▪ Mostly from crops ▪ educate public on buying neonic free plants - Sediments <ul style="list-style-type: none"> ▪ Erosion from boating use ▪ Lack of shoreline buffers - Untreated stormwater runoff <ul style="list-style-type: none"> ▪ New construction ▪ Established development - Salt - Removal of shoreline vegetation 	<ul style="list-style-type: none"> - Sedimentation <ul style="list-style-type: none"> ▪ Construction, new housing construction ▪ exposed soil, lack of buffers - Natural conversion of wetland types (Type II → Type VI) <ul style="list-style-type: none"> ▪ Negative impacts on wildlife and pollinators -Nutrients <ul style="list-style-type: none"> ▪ Ag and residential ▪ Ditching ▪ Lack of buffers - Groundwater withdrawal

09-22-2015 Water Plan Committee Meeting Minutes

**Minutes
Sherburne County Water Plan Advisory Committee Meeting
September 22nd, 2015
Sherburne History Center**

Member in Attendance: Clint Jordahl, Melanie Waite-Altringer, Shane Berg, John Barr, Tom Hammer, John Riebel

Advisors in Attendance: Tiffany Determan, Sherburne SWCD; Francine Larson, Sherburne SWCD; Frances Gerde, Sherburne SWCD; Zach Guttormson, Sherburne County Zoning

Clint Jordahl called the meeting to order at 5:00 p.m.

1. **Review of July 21st, 2015 meeting minutes.** Melanie Waite-Altringer made a motion to approve the minutes as distributed. Tom Hammer seconded the motion. All were in favor. The motion passed.
2. **Negotiate Agenda.** No changes were made, Tom Hammer made a motion to approve the agenda as distributed. Melanie Waite-Altringer seconded the motion. All were in favor. The motion passed.
3. **Announcements/General Discussion**
 - a. SWCD Updates
 - i. **Birch Lake.** A grant application was submitted for several projects designed on the west side of Birch Lake. These projects were a result of the subwatershed assessment that was completed on the lake. The projects are being designed by the Big Lake Township engineer and working closely with the SWCD.
 - ii. **Buffer Initiative.** Tiffany briefly mentioned the buffer initiative will have to be addressed in the water plan once more details are given to the SWCD. It might be wise to arrange a meeting with Mike Lindeneau the County Ditch Inspector to better understand the public ditch situation.
 - iii. **SWCD Events.** Tiffany passed out two handouts for upcoming SWCD events. The Elk River watershed cleanup on October 3rd and the Fall Family Forestry Field Day on October 10th.
 - b. County Updates
 - i. **Geologic Atlas.** Zach mentioned the atlas is in the second phase which involves groundwater. This phase is prepared by the DNR.
 - c. Member Announcements.
 - i. **Community Harvest Party.** Melanie gave a quick summary of the harvest party. Despite the rainy weather around 100 people were in attendance.
4. **AIS Plan Progress Update**
 - a. First initiative: Education
 - i. Melanie is in the process of working with students and faculty at Anoka-Ramsey Community College to design new signs for the boat accesses around the county. Over the summer the SWCD intern had inventoried the current signs at all public accesses.
 - ii. Tiffany is meeting with Climb Theater to discuss presentations in the Elk River School district.

09-22-2015 Water Plan Committee Meeting Minutes (continued)

- b. The Conservation Corps did AIS surveys on Lakes over the past few weeks. They focused their efforts on Orono, Birch, Ann, Sandy, West Hunter, Fremont.
- c. Tiffany is receiving reports from the County Water patrol after they inspect boat launches. He is finding that there is about 20% non-compliance.
- d. The SWCD hired level one inspectors from the company Water Guard, they will focus their efforts on the lakes located on the eastern portion of the County.
- e. Next year Tiffany plans to organized volunteers to sample for zebra mussels on selected lakes
- f. Lastly Tiffany gave an update on the Geofencing trial, there were around 400-500 click throughs.

5. Public Hearing- 5:45-5:55

- a. Open public hearing was scheduled for a ten minute time slot, no outside attendees were present, hearing did not take place

6. Water Plan Priority and Identification

- a. Currently reviewing data gathered during public process- around 166 surveys were collected during that time
- b. Tiffany gave an overview of the current water plan and its three priority concerns and the accomplishments that were a result
 - i. Impaired and degraded lakes and streams in the Elk River Watershed
 - ii. Increasing urban and residential land use replacing agriculture, forest and open space creates a concern about water quality and quantity due to increased impervious areas
 - iii. Quality and quantity of riparian and aquatic vegetation
- c. Group Activity
 - i. The water plan committee prioritized the concerns received during the comment period into 4 main categories (see table)

The next meeting was not scheduled

Meeting called to adjourn by Clint Jordahl. A motion was made by Melaine Waite-Altringer. The motion was seconded by Shane Berg. All were in favor. The motion passed.

Meeting was adjourned at 6:49 p.m.

09-22-2015 Water Plan Committee Meeting Minutes (continued)

Beginning Statement: Planning Considerations	Consider high-level state priorities, keys to implementation, and criteria for evaluating proposed activities in the states non-point priority funding plan
	Use data from Watershed Protection and Restoration Strategy (WRAPS) to develop action items
	Increase communication among government agencies
	Increase Environmental Education (Citizen, LGU and staff)
	Need more information to make an informed decision
	Ensure septic systems meet rules
	Communication between County and Township
	Increase regulation/enforcement or existing ordinances
	Targeting BMP's, aligning local plans and engaging agriculture
Groundwater in Sensitive Areas and Key Townships	Reduce groundwater contamination
	Groundwater quantity and quality
	Agricultural chemicals and nutrients in ground and surface water
	Agricultural land management
Land use in Riparian Areas	Increasing urban and residential land use replacing agriculture, forest and open space creates a concern about water quantity and quality due to increased impervious areas
	Impaired and degraded lakes and streams in the Elk River Watershed
	Development pressure
	Ensure minimal impacts from development pressure/land use changes
	Reduce contaminated runoff (residential/farm/urban)
	Properly manage stormwater/drainage in existing developments
	Restoring natural lakeshore vegetation
	Quality and quantity of riparian and aquatic vegetation
	Livestock and manure management
	Reduce runoff from agricultural land
	Agricultural drainage, wetlands and water retention
Flooding	
AIS	Prevent the Spread of AIS

01-26-2016 Water Plan Committee Meeting Minutes

Minutes

Sherburne County Water Plan Advisory Committee Meeting

January 26th, 2016

Sherburne History Center

Members in Attendance: Rick Dahlman, Doug Hipsag, T. Vander Eyk, Melanie Waite-Altringer, Clint Jordahl, John Riebel, Barb Tucker

Advisors in Attendance: Francine Larson, Sherburne SWCD; Paul Johnson, Sherburne SWCD; Frances Gerde, Sherburne SWCD; Zach Guttormson, Sherburne County Zoning; Mike Lindenau, Sherburne Public Works

Barb Tucker called the meeting to order at 5:30 p.m.

1. **Review of September 22nd, 2015 meeting minutes.** Rick Dahlman made a motion to approve the minutes as distributed. T. Vander Eyk seconded the motion. All were in favor. The motion passed.
2. **Approval of the Agenda.** No changes were made, Clint Jordahl made a motion to approve the agenda as distributed. John Riebel seconded the motion. All were in favor. The motion passed.
3. **Elect Chair.** No nominations of a new chair, John Riebel made a motion to keep Barb Tucker as chair. T. Vander Eyk seconded the motion. All were in favor. The motion passed.
4. **Elect Vice Chair.** T. Vander Eyk nominated Clint Jordahl to remain vice chair. Rick Dahlman seconded the motion. All were in favor. The motion passed.
5. **Announcements**
 - a. SWCD Updates
 - i. Francine Larson introduced Paul Johnson who was recently hired as the new Water Resource Specialist/Water Plan Coordinator for the Sherburne SWCD. Paul Johnson gave a brief bio of his previous work experience.
 - b. County Updates
 - i. Zach Guttormson stated the Sherburne County Zoning department's new hire, Sam Lucast. Guttormson also stated that the Zoning department is creating a new permitting system for the County. Mike Lindenau spoke briefly about updated buffer maps that the Public Works Department staff, SWCD staff, and Planning and Zoning staff is working on that will display public and private ditches, these maps will be available to the public eventually.
 - c. Member Announcement
 - i. Clint Jordahl and Melanie Waite-Altringers positions expired in December of 2015. They both agreed to continue to serve on the water plan committee as at large members as opposed to at large alternate members. Their reinstatements are awaiting approval from the County Board of Commissioners.
 - ii. C. Perry Schenk resigned from the Water Plan Committee after many years of service.
6. **Water Plan Update**
 - a. Francine Larson asked everyone to give comments about the draft priority concerns that will be added to the scoping document. Everyone was in agreement with the priority concerns.

01-26-2016 Water Plan Committee Meeting Minutes (continued)

Sherburne County Water Plan Advisory Committee
January 26th, 2016

Page 2

- b. Rick Dahlman mentioned the importance of comparing the water plan priorities to other agencies plans that overlap the Sherburne county area in order to minimize duplicated efforts.
- c. The next steps – Paul Johnson will draft the Priority Concerns Scoping Document that will then be sent to BWSR for review.
- d. Francine Larson asked the water plan committee to allow for an extension of the water plan update to February of 2018. Francine Larson stated she will be requesting approval from the County Board of Commissioners on February 2nd. Rick Dahlman made a motion. Melanie Waite-Altringer seconded the motion. All were in favor. The motion passed.

7. AIS Update

- a. Access Signs. Melanie brought the public access signs that she and her students at the Ramsey Anoka Community College developed. They are specific to Sherburne County and will be placed at all public boat accesses.
 - i. The signs are to be completed by March and the water plan committee will seek out groups of volunteers that will be able to install them at each access (boy scouts, STS, students)
 - ii. Clint Jordahl questioned whether private boat accesses were being inventoried and if the AIS signs could be placed there as well. AIS funding would not be able to pay for the signs or installation, however if funding were to come from a private source that would purchase the signs they would be able to be installed.
 - iii. The idea of creating a smaller handout with similar information as the sign would be helpful to bring to events and other activities.
- b. Climb Theater. Francine gave Larson the committee and update on the climb theater presentations for the 2nd graders at Twin Lakes Elementary. According to the AIS plan Climb Theater will continued to be used in 2016.
- c. 2015 AIS accomplishments and 2016 AIS planned activities were reviewed.

8. Next Meeting Date

- a. The next meeting is set for April 26th, 2016 at 5:30pm at the History Center

9. Next Meeting Topic

- a. Francine Larson proposed the idea to have a meeting topic at the next meeting to inform the water plan committee of water related projects going on around the county. She suggested having Bill Bronder attend the next meeting to talk about his cover crops and irrigation water management projects. Rick Dahlman suggested another topic for a different meeting on tick borne diseases. He is a member of an organization that promotes awareness of tick related diseases and how to avoid them.

Meeting adjourned by consensus at 6:45 pm

Submitted by,
Frances Gerde, Sherburne SWCD

04-26-2016 Water Plan Committee Meeting Minutes

Minutes

Sherburne County Water Plan Advisory Committee Meeting

April 26th, 2016

Sherburne History Center

Members in Attendance: Rick Dahlman, T. Vander Eyk, Melanie Waite-Altringer, Clint Jordahl, Barb Tucker, John Barr

Advisors in Attendance: Francine Larson, Sherburne SWCD; Dan Cibulka, Sherburne SWCD; Frances Gerde, Sherburne SWCD; Andie Bumgarner, Sherburne SWCD; Bill Bronder, Sherburne SWCD; Zach Guttormson, Sherburne County Zoning

Barb Tucker called the meeting to order at 5:34 p.m.

1. **Approval of the Agenda.** No changes were made, Rick Dahlman made a motion to approve the agenda as distributed. T. Vander Eyk seconded the motion. All were in favor. The motion passed.
2. **Review of January 26th, 2016 meeting minutes.** Melanie Waite-Altringer made a motion to approve the minutes as distributed. Rick Dahlman seconded the motion. All were in favor. The motion passed.
3. **Announcements**
 - a. SWCD Updates
 - i. Frances Gerde gave a brief update of the 2016 poster contest in which 3 different schools in Sherburne County are participating in. Francine Larson introduced Dan Cibulka as the new Water Resource Specialist with the Sherburne SWCD.
4. **Water Plan Update**
 - a. No new updates were discussed for the water plan update. The priority scoping document will need reviewing from the water plan committee upon completion.
5. **AIS Update**
 - a. Access Signs. The SWCD brought one of the boat access signs for everyone to see and to discuss installation. Melanie proposed the idea of having students volunteer to help install the signs.
 - b. EDRR Meeting. Francine Larson, Andie Bumgarner and Frances Gerde gave an update on the Early Detection and Rapid Response plan meeting that was held on April 7th. There were representatives from 5 lake associations. Tina Wolbers from the DNR gave a presentation on the process of drafting an EDRR plan.
 - c. AIS Volunteer Training. Francine Larson gave an update on an upcoming training opportunity for interested residents. The training will be led by the DNR and focus on training volunteers
 - d. AIS Task Force Meeting. The next AIS task force meeting will occur on the same night as the next water plan advisory committee meeting.
6. **SWCD Agricultural Activities**
 - a. Bill Bronder with the Sherburne SWCD gave a presentation on the current agricultural water quality activities that are being performed in the County, which included irrigation

04-26-2016 Water Plan Committee Meeting Minutes (continued)

Sherburne County Water Plan Advisory Committee
April 26th, 2016

Page 2

scheduling, cover crop demonstrations, and the MN Ag Water Quality Certification Program.

7. Next Meeting Date

- a. The next meeting is set for July 26th, 2016 at 5:00pm at the History Center. The AIS task force meeting will immediately follow.

8. Next Meeting Topic

- a. Rick Dahlman proposed the next meeting topic focus on tick borne diseases.

Melanie Waite-Altringer made a motion to adjourn the meeting. John Barr seconded the motion. All were in favor. The motion passed, meeting adjourned at 6:30 pm.

Submitted by,
Frances Gerde, Sherburne SWCD

07-26-2016 Water Plan Committee Meeting Minutes

Minutes
 Sherburne County Water Plan Advisory Committee Meeting
 July 26th, 2016
 Sherburne History Center

Members in Attendance: Barb Tucker, Melanie Waite-Altringer, T. Vander Eyk, John Barr, Rick Dahlman, Clint Jordahl, John Riebel

Advisors in Attendance: Francine Larson, Sherburne SWCD; Dan Cibulka, Sherburne SWCD; Frances Gerde, Sherburne SWCD; Zach Guttormson, Sherburne County Zoning; Lynn Waytaskek, Sherburne County Zoning; Jason Weirnerman, BWSR; Don Buckhout, BWSR

Barb Tucker called the meeting to order at 5:04 p.m.

1. **Approval of the Agenda.** Francine asked to move the PRAP discussion to the first item of the agenda. T. Vander Eyk made a motion to approve the changes. Melanie Waite-Altringer seconded the motion. All were in favor. The motion passed.
2. **Review of April 26th, 2016 meeting minutes.** Melanie Waite-Altringer made a motion to approve the minutes as distributed. T. Vander Eyk seconded the motion. All were in favor. The motion passed.
3. **PRAP – Don Buckhout**
 - a. Don Buckhout with BWSR attended the meeting to explain the Performance Review and Assistance Program (PRAP) that the Sherburne SWCD must undergo this year.
 - b. The PRAP is a routine review process that evaluates progress on plan implementation, operational effectiveness, and partner relationships.
 - c. This process consists of 3 parts:
 - i. Action item form - completed by the SWCD
 - ii. Performance standard check list - completed by SWCD
 - iii. Partner Survey – Completed by partners
 - d. The purpose of the PRAP process is to ensure the SWCD is functioning to its full capacity, it is intended to cover all LGU’s at least once every 10 year.
 - e. The SWCD’s portion of the process is to be completed by October
4. **Announcements**
 - a. SWCD Updates
 - i. Dan Cibulka gave a brief update on SWCD activities dealing with AIS.
 - b. County Updates
 - i. Zach Guttormson discussed the shore land ordinance revision that is underway. The tentative completion date is set for the fall of 2016.
5. **Water Plan Update**
 - a. Dan provided members with a draft copy of the completed Priority Concerns Scoping Document and gave a brief presentation on the process of developing the document. Dan also outlined a timeline for the approval process of the Priority Concerns Scoping document.
 - b. The water plan members were asked to review the document and make any suggestions before approval.

07-26-2016 Water Plan Committee Meeting Minutes (continued)

Sherburne County Water Plan Advisory Committee
April 26th, 2016

Page 2

- c. Rick Dahlman made a motion to approve the Draft Priority Concerns Scoping Document as it. T. Vander Eyk seconded the motion. All were in favor. The motion passed.

6. Next Meeting Date

- a. The next meeting is set for November 29th, 2016 at 5:00pm at the History Center. The AIS task force meeting will immediately follow.

7. Next Meeting Topic

- a. Water Plan Update
- b. PRAP Review

John Riebel made a motion to adjourn the meeting. T. Vander Eyk seconded the motion. All were in favor. The motion passed, meeting adjourned at 6:21 pm.

Submitted by,
Frances Gerde, Sherburne SWCD

Priority Concern Scoping Document: Appendix C

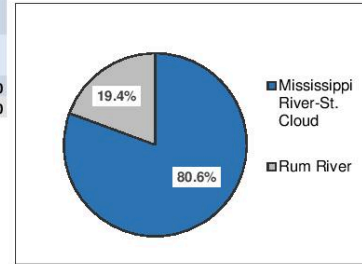
Public Input Survey

Sherburne County Water Plan Survey

1. Which watershed is your home / land located in?

If your jurisdiction falls within both watersheds, please fill out two surveys, one for both watershed areas. Priorities in one watershed may be different than the other.

Answer Options	Response Percent	Response Count
Mississippi River-St. Cloud	80.6%	129
Rum River	19.4%	31
answered question		160
skipped question		0



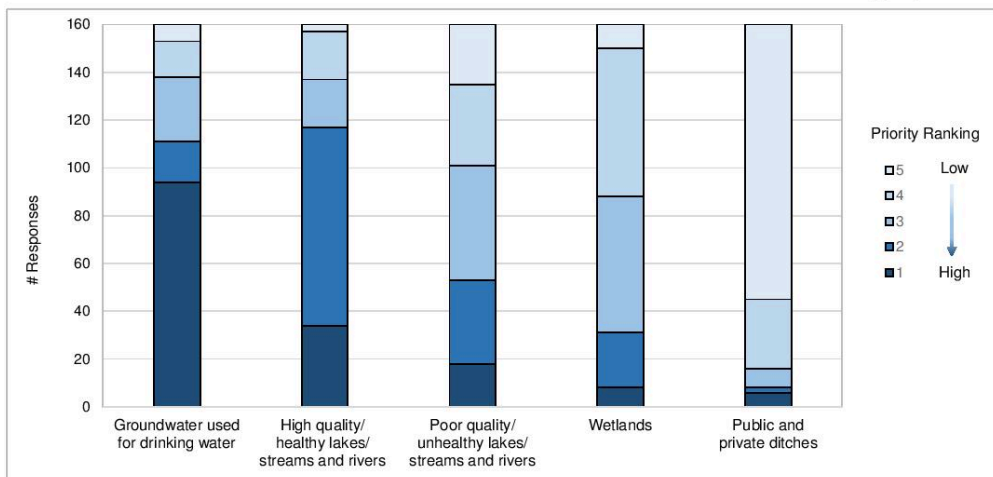
Participants:

- | | |
|--|--------------------------------------|
| Citizens– many of them! | Briggs Lake Chain Association |
| Sherburne County Planning and Zoning | MPCA-Brainerd/Baxter Regional Office |
| Water Plan Committee (also created survey) | Little Elk Lake Association |
| Sherburne County Public Works | Livonia Township |
| Sherburne County Health and Human Services | Mille Lacs SWCD |
| Sherburne County Extension Service | Clear Lake Township |
| Stearns County Environmental Services | City of Big Lake |
| City of St. Cloud | NRCS |
| Sherburne SWCD | Sherburne County Commissioners |
| Sherburne County Sheriff's Office dispatch | Sherburne SWCD Supervisors |
| Palmer Township | Baldwin Township |
| City of Elk River | Elk River Watershed Association |

2. Which resources are the highest priority to you / your group?

(Rank 1 to 5, with 1 being the highest priority)

Answer Options	1	2	3	4	5	Rating Average	Response Count
Groundwater used for drinking water	94	17	27	15	7	1.90	160
High quality/healthy lakes/streams and rivers	34	83	20	20	3	2.22	160
Poor quality/unhealthy lakes/streams and rivers	18	35	48	34	25	3.08	160
Wetlands	8	23	57	62	10	3.27	160
Public and private ditches	6	2	8	29	115	4.53	160
answered question							160
skipped question							0

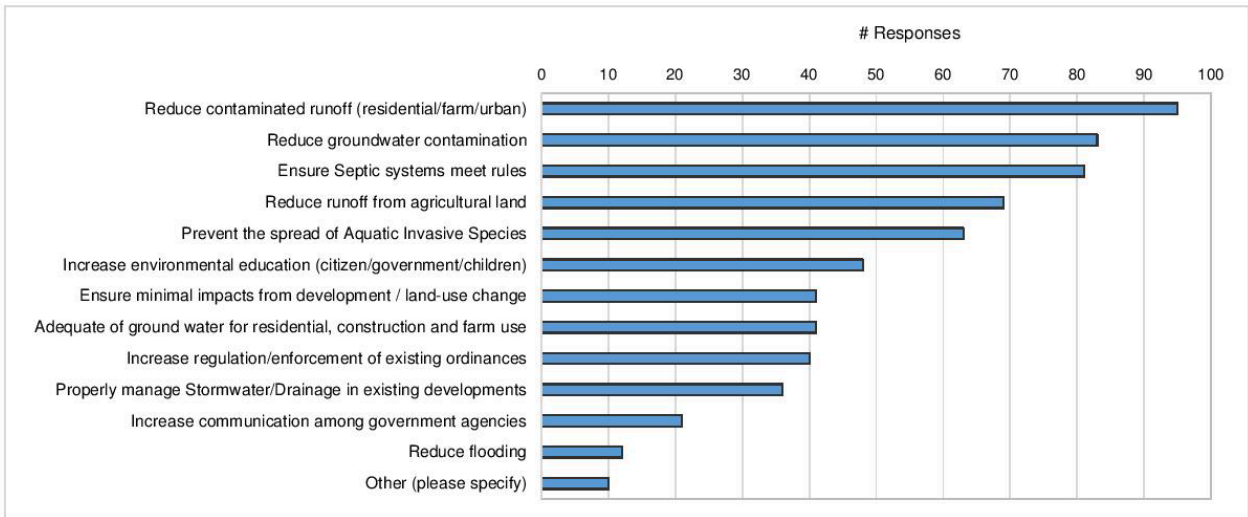


Survey Results (continued)

3. Check the top four activities you feel will help to clean up our waters.

This list is NOT all inclusive, please feel free to add your own ideas!

Answer Options	Response Percent	Response Count
Reduce contaminated runoff (residential/farm/urban)	59.4%	95
Reduce groundwater contamination	51.9%	83
Ensure Septic systems meet rules	50.6%	81
Reduce runoff from agricultural land	43.1%	69
Prevent the spread of Aquatic Invasive Species	39.4%	63
Increase environmental education (citizen/government/children)	30.0%	48
Ensure minimal impacts from development pressure/land-use change	25.6%	41
Ensure there is adequate quantity of ground water for residential, construction and farm use	25.6%	41
Increase regulation/enforcement of existing ordinances	25.0%	40
Properly manage Stormwater/Drainage in existing developments	22.5%	36
Increase communication among government agencies	13.1%	21
Reduce flooding	7.5%	12
Other (please specify)	6.3%	10
answered question		160
skipped question		0
		160
		0



Survey Results (continued)

Additional Comments	
	Poor treatment to people from government and city buildings
	We live behind Zimmerman Elementary. Our garage and home flood every spring because of the runoff from the school.
	With the increased land-use changes, contaminated and polluted water becomes a sever problem. There is therefore an urgent need to increase environmental education as we project the major sources of clean water, which is mainly groundwater while at the same time ensuring continued supply
	All are important, hard to choose. Clean water is vital, education is important to minimize contamination
	Great survey
	Small lots, concentrated population, sensitive and threatened environment worth reexamining septic system rules, testing, penalties, grants, runoff reduction/elimination, etc.
	Lake Orono is in tough shape. We can't even get to our shoreline with our boat
	MR-SC watershed is a very diverse watershed with some very nice surface water resources. Excellent local partner groups/organizations exist within the watershed who work hard in efforts to restore and protect the watershed's surface water resources. (MPCA-Brained)
	Restoring natural lakeshore vegetation should be a priority
	There are MANY lake shore homes with septs that do not meet code and are sold not meeting code. I know of many instances of home owners punching holes in holding tanks and these do not get inspected during resales. This will never get corrected if they never get inspected correctly. Aren't you looking for things like this?
	Changing pubic opinion abut what a healthy lake requires is an important step if we want to see improvement of our lakes in the future (Sherburne SWCD)
	The Briggs Lake chain is a joke the way it floods 3-5 times every year. I understand a spring flood but every time it rains 2" the whole system floods for a week. People scramble to take boats and secure docks.
	The County is located within a geologically sensitive region known as the Anoka Sand Plain, and as a result, groundwater is the county is more susceptible to pollution. As such, enforcement of ordinances needs to be effective to prevent and mitigate against known sources of pollution. (Sherburne County)
	Ordinances in all parts of the county need to be changed for developments. No animals, other than dogs/cats should be allowed due to manure, etc. There should also be a limit on the number of dogs/cats a homeowner can have.
	Other excess junk on a person's property need to also be addressed as over time this can affect the groundwater as well.
	This in not something that I have concerned myself with in the past so it was hard to answer
	Live in Elk River so filled out both Miss and Rum River. Thanks for your effort!
	More education for appointed officials on the zoning commission and board of adjustments (a township)
	Communication between County and Township
	Do not have enough information to make an educated decision to choose any of the others.
	Eliminate the MS4 rating for Sherburne County
Agency Survey Comments	
	Consider High-level state priorities, keys to implementation, and criteria for evaluating proposed activities in the States Non-point priority Funding Plan
BWSR	Development Pressure. Groundwater quantity and quality. Use data from Watershed Protection and Restoration Strategy (WRAPS) to develop action items.
MN DNR	Agree with existing water plan priorities Impaired and degraded lakes and streams in the Elk River Watershed Increasing urban and residential land use replacing agriculture, forest and opens space creates a concern about water quantity and quality due to increased impervious areas
MDA	Quality and quantity of riparian and aquatic vegetation Targeting BMPs, Aligning Local Plans & Engaging agriculture Agricultural Land Management Livestock and manure management Agricultural Chemicals and Nutrients in Ground and Surface Water Agricultural Drainage, wetlands and water retention

Priority Concern Scoping Document: Appendix D

State Agency Input - BWSR



September 8, 2015

Tiffany Determan, Water Plan Coordinator
 Sherburne County Soil and Water Conservation District
 14855 Hwy 10
 Elk River, MN 55330

RE: Response to invitation to submit priority concerns for the Sherburne County Priority Concerns Scoping Document for the Local Water Management Plan Update

Dear Sherburne County Commissioners:

Thank you for providing the opportunity to provide priority issues and plan expectations for the update and revision of the Sherburne Comprehensive Local Water Management Plan, as authorized under the Comprehensive Local Water Management Act, Minnesota Statutes, §103B.301.

The Board of Water and Soil Resources (BWSR) has the following specific priority issues:

- The state’s Nonpoint Priority Funding Plan (NPPF) outlines a criteria-based process to prioritize Clean Water Fund investments—if the county is intending to pursue Clean Water Fund as a future source of funding, partners are strongly encouraged to consider the high-level state priorities, keys to implementation, and criteria for evaluating proposed activities in the NPPF.
- The County’s location between the metropolitan areas of Elk River and Saint Cloud will be a prime area for development in the next decade. The county should explore ways to incorporate strong land use planning and zoning tools to manage land conversion, residential growth, and other challenges associated with maintaining or improving water quality in the face of increasing development pressures.
- Groundwater quantity and quality management will be critical to meet the needs of current and future residents. The County is encouraged to identify ways to ensure that groundwater extraction is sustainable and that surface land management activities do not impair the ground water resources. Many of the local communities have wellhead protection plans that should be incorporated into the final water plan. In addition, the plan should include recommendations that encourage individual residential, commercial, industrial, and agricultural users to efficiently manage the use of groundwater.
- There are a variety of Watershed Protection and Restoration Strategy (WRAPS)

Bemidji 403 Fourth Street NW Suite 200 Bemidji, MN 56601 (218) 755-2600	Brainerd 1601 Minnesota Drive Brainerd, MN 56401 (218) 828-2383	Detroit Lakes 26624 N. Tower Road Detroit Lakes, MN 56501 (218) 846-8400	Duluth 394 S. Lake Avenue Suite 403 Duluth, MN 55802 (218) 723-4752	Mankato 12 Civic Center Plaza Suite 3000B Mankato, MN 56001 (507) 344-2821	Marshall 1400 East Lyon Street Marshall, MN 56258 (507) 537-6060	New Ulm 261 Highway 15 South New Ulm, MN 56073 (507) 359-6074	Rochester 3555 9 th Street NW Suite 350 Rochester, MN 55901 (507) 206-2889
---	--	---	---	--	---	--	---

Central Office / Metro Office 520 Lafayette Road North Saint Paul, MN 55155 Phone: (651) 296-3767 Fax: (651) 297-5615

www.bwsr.state.mn.us TTY: (800) 627-3529 An equal opportunity employer

State Agency Input – BWSR (continued)

documents that have been or are being developed for watersheds within Sherburne County. The data found within these plans should be used as a foundation for developing action items. The plan should also ensure that each watershed is treated independently and the strategies promoted within the WRAPs document receive consideration for inclusion into the 10 year water plan strategy.

- The Mississippi River serves as a border for the southwestern portion of the county. The County should continue to work with partners on both sides of the river to ensure the river is managed a whole ecosystem. The County should also partner with upstream and downstream organizations and local governments to ensure a continuous management strategy is implemented.

We look forward to working with you through the rest of the plan development process. If you have any questions, please feel free to contact Jason Weinerman at jason.weinerman@state.mn.us or 218-203-4477.

Sincerely,



Jason Weinerman
Board Conservationist
Minnesota Board of Water and Soil Resources

cc: Rob Sip, MDA (via email)
George Minerich, MDH (via email)
Gina Bonsignore, DNR (via email)
Juline Holleran, MPCA (via email)
Jim Haertel, BWSR Regional Manager (via email)

State Agency Input – MDNR

Minnesota Department of Natural Resources

1200 Warner Road, St. Paul, MN 55106
Phone: 651-259-5800
Fax: 651-772-7977



Sept 4, 2015

Tiffany Determan
Water Resources Specialist/Water Plan Coordinator
14855 Hwy 10
Elk River, MN 55330
763-241-1170 x132

Dear Ms. Determan,

Our agency appreciates the opportunity to provide input on priority water management issues. As a starting point, we reviewed the current Sherburne County Water Plan, as amended in 2012. We agree with the three priorities listed in that plan:

- Impaired and degraded lakes and streams in the Elk River Watershed;
- Increasing urban and residential land use replacing agriculture, forest and open space creates a concern about water quantity and quality due to increased impervious areas; and
- Quality and quantity of riparian and aquatic vegetation.

We particularly support the county's efforts with shoreline protection and buffering; storm water run-off prevention; and educational and outreach efforts toward exotic and aquatic invasive species management. These efforts help support and sustain the outdoor recreational activities for the public to enjoy at lakes, rivers, and trails. Addressing these priorities will also help sustain the health of the important plant and animal communities in the county.

We offer the following additional considerations and observations as you proceed with the planning process:

- Addressing the Elk River watershed is a sound approach, as it encompasses several counties with a diversity of staff and skillsets.
- Without assistance, many private landowners along Elk River and other rivers in the county have conserved land. We suggest that the plan acknowledge the positive actions of these landowners, encouraging them to keep conserving their land to preserve habitat and buffer waters. Recognition of this magnitude would require some fairly detailed GIS and on-the-

State Agency Input – MDNR (continued)

ground effort, however recognition is a strategy that could inspire others to follow suit and is often deeply appreciated by the landowner.

- The county contains areas with unique native plant communities supporting a diversity of wildlife, such as the Sand Dunes State Forest. The continued health of these natural areas is supported by stands of perennial vegetation in the larger landscape. Given the trend of diminishing tree lines and tree groves resulting from residential development and modern agricultural practices, we support the county's efforts to improve the quality and quantity of riparian vegetation and urban forestation.
- Managing the increased levels of irrigation in residential and agricultural landscape is also a concern, from a water supply and habitat perspective.
- More funding for staff will accelerate implementation of increasingly complex projects relating to buffers and other projects required to address needs discovered through the TMDL process.
- A resource related plan for your reference is the Anoka Sand Plain Subsection Forest Resource Management Plan. Included in the plan is Appendix C – Operational Plan for Management of Sand Dunes State Forest.
<http://www.dnr.state.mn.us/forestry/subsection/anoka/plan.html>
- The Sand Prairie Wildlife Management Area Habitat Management Report describes objectives and management strategies for that WMA.
http://www.dnr.state.mn.us/wmas/habitat_management_report.html?pgm_prj=WMA01526

We look forward to further communications as the planning process continues.

Regards,



Gina Bonsignore
Regional Planner, DNR Central Region
1200 Warner Road
St Paul, MN 55106
651-278-5809

State Agency Input – MDA



JUNE 2014

DRAINAGE RECOMMENDATIONS FOR LOCAL WATER MANAGEMENT PLANS

The Minnesota Department of Agriculture (MDA) recommends the following drainage related items be considered or included as goals or objectives in local water management plans when applicable. The MDA realizes that not all of these recommendations may be included or adopted due to financial resources, staff capacity, and other factors at the local level.

T
H
I
N
K

M
U
L
T
I
P
U
R
P
O
S
E

D
R
A
I
N
A
G
E

- **Comprehensive Drainage Management Plans** - The MDA recommends that your Local Governmental Unit (LGU) consider developing a comprehensive plan to guide efforts related to drainage system management. A comprehensive plan may include prioritization of Redetermination of Benefits and other ditch system maintenance, repair or improvement projects. An example of a recent plan is from Martin County, which released their plan in February 2014 and can be found at this weblink: <http://www.co.martin.mn.us/index.php/government/ditch-administration>
- **Drainage Advisory Committee** - The management of public drainage systems is complex and involves consideration of how public open ditches, tiles and culverts interact or are affected by private systems – both subsurface tile and open ditches with private culverts. Therefore, the MDA recommends that your LGU create a permanent Drainage Advisory Committee to inform important drainage issues before critical decisions are made by local policy-makers.
- **System-wide Culvert Inventory** - This will provide much needed information about the location, capacity and condition of culverts that are part of or adjacent to the public drainage system. Once conducted, your LGU may want to consider how culvert sizing can be utilized to address localized flooding conditions. The MDA refers you to one technical paper that was developed by the Technical and Scientific Advisory Committee of the Red River Watershed Management Board titled, "Culvert Sizing for Flood Damage Reduction" and the report can be found at the following website: <http://www.rwmb.org/files/FDRW/TP15.pdf>
- **Open Tile Inlet Inventory** - The MDA recommends developing an inventory (if one does not exist) of open tile inlets that are immediately adjacent to public ditches. An inventory will provide information about where inlets could be converted into blind inlets, rock inlets or some other type of inlet to reduce sediments and to slow the flow of water. The inventory could also provide information about where side inlet controls would be beneficial and where efforts could be targeted and prioritized. Your SWCD may already have knowledge of areas that are in need of open tile inlet conversion or side inlet controls.
- **Drainage Co-efficients (DC)** - The MDA recommends that DCs be based on engineering data and other relevant information to guide local DC policies and decisions. The MDA does not recommend specific DCs as conditions vary from one geographic region to another and there is no "one size fits all" approach to DCs. Crop tolerances for standing water should be considered and this is one area where a Drainage Advisory Committee could provide additional guidance and expertise.
- **Drainage Water Management (DWM) Plans** - The MDA recommends that LGUs encourage the development and implementation of DWM plans when new pattern tile systems are installed or when existing systems are repaired or upgraded. The MDA realizes that DWM plans may not fit the needs of every farmer or landowner, but efforts should be made to promote the management of drainage water.
- **Outreach Efforts** - Consider demonstration sites for bioreactors, saturated buffers or other drainage Best Management Practices (BMP) to illustrate operation, maintenance and performance issues to interested landowners and farmers. The MDA can assist with local efforts to demonstrate BMPs.
- **Water Storage** - The MDA recommends that water storage be further considered in local plans to include both short-term and long-term storage. The MDA realizes that storage projects are expensive and require time to process permits before construction can start. Storage may include but not be limited to wetland restoration or creation; large-scale or small-scale constructed impoundments; or water retention and detention.

Contact Information:
 Robert Sip
 Environmental Policy Specialist
 Pesticide and Fertilizer Mgmt. Div.
 Minnesota Dept. of Agriculture
 625 Robert Street North
 St. Paul, MN 55155-2538

 651-319-1832 (Cell Number)
rob.sip@state.mn.us
www.mda.state.mn.us

In accordance with the Americans with Disabilities Act, an alternative form of communication is available upon request.
 TDD: 1-800-627-3529. MDA is an Equal Opportunity Employer.

 Minnesota Department of Agriculture, 625 Robert Street North, St. Paul, MN 55155-2538
www.mda.state.mn.us 800-967-AGRI (2474)

State Agency Input – MDH**Priority Concerns & Actions Input
Sherburne County Local Water Management Plan Update**

Agency/organization: Minnesota Department of Health

Submitted by: George Minerich, Source Water Protection Unit, St. Cloud

Submission deadline: Oct 31, 2015

Priority Concern 1:**Protect ground water-based drinking water sources within Sherburne County**

Regarding this concern please answer the following:

Why is it important the plan focus on this concern (include or cite relevant data)?

Sherburne County's citizens depend on ground water for drinking water. Wellhead protection efforts result in public water suppliers developing and implementing wellhead protection plans. All public water suppliers within the county should be listed within the county management plan (see the below referenced web address for a complete listing of public water suppliers in Sherburne County). Private wells also need protection from potential contaminant sources

Protecting the drinking water for the majority of citizens within Sherburne County is a wise and relatively inexpensive investment in the community's future. Additional information regarding drinking water supplies can be found at:

www.health.state.mn.us/divs/eh/water/swp/swa/index.htm

What actions are needed?

Acknowledgement and support of public water supply wellhead protection areas within the county. Work with community and noncommunity public water suppliers in development and implementation of wellhead protection activities. Consider wellhead protection areas and groundwater vulnerability when making land use decisions to protect both public and private wells. When requested by a public water supplier, provide aid in efforts to locate wells for ground water modeling efforts undertaken in wellhead protection. All wells should be constructed with proper setbacks to potential contaminant sources in accordance of MN Rules Chapter 4725.

What resources may be available to accomplish the actions?

State, County and other local units of government or public water supplier staff time to provide input into development and implementation of wellhead protection plans and county-wide land use planning. Presently, the MDH through the Clean Water, Land & Legacy Amendment are making source water protection grants available to assist public water suppliers address drinking water protection issues. Grants program information is available at:

<http://www.health.state.mn.us/divs/eh/water/swp/grants/index.html>

What area(s) of the county is high priority?

As community and noncommunity nontransient public water suppliers complete wellhead protection plans there will be designated "drinking water supply management areas". As these areas are approved by the MDH they are posted on the above listed website. All noncommunity

State Agency Input – MDH (continued)

transient public water suppliers have a 200 foot radius surrounding the well that is designated as the wellhead protection area. Other areas that have vulnerable geologic settings and private wells need to be protected. County Geologic Atlases contain information about groundwater vulnerability. A map of the state groundwater vulnerability (susceptibility) can be found here: http://www.dnr.state.mn.us/whaf/about/scores/geomorphology/gw_contamination.html

Priority Concern 2:**Sealing unused, unsealed wells**

Regarding this concern please answer the following:

Why is it important the plan focus on this concern (include or cite relevant data)?

Proper well abandonment is an effective means of protecting groundwater from potential contaminants that may be carried into an aquifer. Also, unused, unsealed wells can pose a safety hazard to children or animals and a potential liability to the well owner.

What actions are needed?

Inventory where unused, unsealed wells may be located. Develop or continue a cost share program to aid property owners in sealing unused, unsealed wells.

What resources may be available to accomplish the actions?

Local units of government staff for inventory purposes. County and City awareness to encourage well sealing where appropriate in land use decisions. Clean Water, Land & Legacy Amendment funds are currently available through MDH for well sealing of public water supply wells. Other State and Federal programs may also include funding for well sealing.

<http://www.health.state.mn.us/divs/eh/wells/sealing/index.html>

What area(s) of the county is high priority?

Wellhead protection areas. Based upon detail of inventory, unused, unsealed wells that reach or penetrate to the same aquifer used by a public water supply system should be sealed first.

Priority Concern 3:**Develop a local ground-water quality data base.**

Regarding this concern please answer the following:

Why is it important the plan focus on this concern (include or cite relevant data)?

There is a need to better understand local ground water quality. Sherburne County should consider developing a water quality data bases for private wells that are compatible with the County Well Index and can be used in a geographic information system (GIS) format. The water quality data base can be used (1) to show the distribution of water quality problems, (2) characterize aquifers of concern, and (3) identify factors contributing to water quality problems. This can lead to better understanding of drinking water issues such as nitrate contamination or areas of arsenic in the county and the ability to track these contaminants. Currently, there is limited data available.

State Agency Input – MDH (continued)

What actions are needed?

Evaluate the possibility of establishing a ground water data base using local data. Consider providing testing for private well owners.

What resources may be available to accomplish the actions?

The Minnesota Department of Health will assist in supplying expertise to help the county develop their water quality data base for storing and retrieving water quality data.

What area(s) of the county is high priority?

The entire county could benefit from this effort but areas of concern would include areas that currently are known to be impacted by nitrates, arsenic or other contaminants.

Priority Concern: 4

Surface Drinking Water Protection - Mississippi River and Tributaries

Regarding this concern please answer the following:

Why is it important the plan focus on this concern (include or cite relevant data)?

The Mississippi River is a major source of drinking water for the Minneapolis & St. Paul metropolitan area. Watershed protection and / or restoration activities are important to help protect the Mississippi River as a drinking water source. The Elk River watershed is located within the priority B area of the Minneapolis and St. Paul Source water Protection Plans. On-going implementation of activities associated with the Elk River TMDL Watershed project help improve and protect Mississippi River as a drinking water source.

Support and implementation of activities along the Mississippi River that reduce potential contaminant run-off, spills or discharges to the river should be a priority in the county water plan.

What actions are needed?

Continue to support / implement practices and projects associated with the Elk River TMDL Project that reduce nutrient loading and sources of e-coli bacteria. Inventory possible large contamination sources that may leak or spill contaminants into storm water conveyances, ditches or directly or to tributaries of the Mississippi River.

What resources may be available to accomplish the actions?

State watershed planning and implementation grants. Utilize local units of government staff for inventory purposes. Create County and City awareness to encourage proper material, waste and spill management. Pursue other State and Federal programs that fund waste and spill management through local resource agencies.

What area(s) of the county is high priority?

Cities, commercial/industrial developments, bulk chemical storage/processing sites or other large manufacturing facilities located within 2 miles of the banks of the Mississippi river and cities, commercial / industrial developments bulk chemical storage sites or other large manufacturing facilities located adjacent to or on a tributary of the Mississippi River.

State Agency Input – MDH (continued)

Priority Concern: 5

Identify Possibly Surface Spill/Pollution Routes to Mississippi River

Regarding this concern please answer the following:

Why is it important the plan focus on this concern (include or cite relevant data)?

The Mississippi River is a major source of drinking water for the Minneapolis & St. Paul metropolitan area.

What actions are needed?

Inventory and map stormwater and ditch outlets/outfalls into the Mississippi River or its tributaries so that emergency responders will have an inventory of sites and map locations in which to deploy spill response measures in the event of spills that threaten downstream drinking water intakes Mississippi River.

What resources may be available to accomplish the actions?

Local units of government staff for inventory purposes. County and City awareness to encourage proper material, waste and spill management planning. . Pursue State and Federal programs that fund waste and spill management planning through local resource agencies.

What area(s) of the county is high priority?

All stormwater and ditch outlets/outfalls discharging directly into the Mississippi River or discharging to its tributaries with 5 miles of the Mississippi.

State Agency Input – MPCA

**Minnesota Pollution Control Agency**

Brainerd Office | 7678 College Road | Suite 105 | Baxter, MN 56425 | 218-828-2492
800-657-3864 | 651-282-5332 TTY | www.pca.state.mn.us | Equal Opportunity Employer

October 14, 2015

Ms. Tiffany Determan
Water Resources Specialist
Sherburne Soil and Water Conservation District
14855 Highway 10
Elk River, MN 55330

Dear Ms. Determan:

Thank you for the opportunity to provide input on the priority concerns for the revision and update of the Sherburne County Local Water Management Plan (LWMP).

Firstly, the Minnesota Pollution Control Agency (MPCA) would like to sincerely thank the staff at the Sherburne Soil and Water Conservation District (Sherburne SWCD) for all their hard work these past five years in locally coordinating the Mississippi River - St. Cloud (MRSC) Watershed Restoration and Protection Strategy (WRAPS) and Total Maximum Daily Load (TMDL) projects. Thanks to the help of the Sherburne SWCD locally leading these comprehensive watershed projects, both of these projects were successfully completed this past year. With the tremendous amount of local effort that went into these projects, it will be important to best utilize the planning and implementation information specified within the WRAPS and TMDL reports for the LWMP. Other issues that are seen as a priority for the LWMP for Sherburne County include the following:

- Currently there are 40 impairment listings on the Clean Water Act (CWA) Section 303[d] list (for parameters other than mercury) for surface waters within Sherburne County. The January 2015 Watershed MRSC TMDL project addresses 17 impairments within the MRSC watershed including 8 (5 lake and 3 stream) impairments within Sherburne County. Work towards implementing strategies to restore the health of these resources is an important priority. The MPCA's Intensive Watershed Monitoring (IWM)/WRAPS cycle is set to revisit the MRSC watershed in 2019 for the next round of watershed wide monitoring and assessment. We are optimistic that several of the current impairment listings may be candidates for de-listing based on improved water quality data resulting from LWMP strategies implemented during this current IWM interim period.
- There are a significant amount of feedlots and livestock operations within Sherburne County. Some of these operations are situated in close proximity (e.g., Riparian Areas) and/or have the ability to adversely affect the county's surface water resources if Best Management Practices (BMPs) are not followed. It is seen as a high priority to successfully implement the 2015 Buffer Initiative Legislation. The 2012, CWA 303[d] list had a significant number of new impairments within the MRSC watershed including several within Sherburne County. The implementation of adequate buffers may be extremely helpful in resolving some of these issues while providing critical habitat for fish and wildlife species.

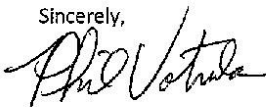
State Agency Input – MPCA (continued)

Ms. Tiffany Determan
Page 2
October 14, 2015

- In 2013, the MPCA initiated a Large River pilot monitoring effort on the Upper Mississippi River which included the reach which defines the southern boundary of the county. The internal preliminary assessment process has begun for the data that was collected in 2013-2014. In the upcoming months, a Professional Judgement Group (PJG) meeting will be held where local partners will be invited to participate in determining the final official assessments of the Upper Mississippi River (Headwaters to Upper St. Anthony Falls). It is recommended that a representative from Sherburne SWCD/County attend this meeting and/or provide input to the MPCA Watershed Assessment Team.
- Sherburne County will likely experience a high growth/development rate in the near future similar to what the county was experiencing prior to the period of economic decline in 2007-2008. Along with the expected growth increase, the county will also see increases in the amount of impervious surface and subsequent stormwater runoff potential. Stormwater runoff from streets, parking lots, and other impervious surfaces can carry suspended sediment and contaminants (e.g., bacteria and phosphorus) and discharge into surface waters. These discharges can contribute to surface water impairments in the county. The MPCA has developed the Minnesota Stormwater Manual to help local government officials, urban planners, developers, contractors, and citizens prevent stormwater related pollution. This manual is available on the MPCA website http://stormwater.pca.state.mn.us/index.php/Main_Page.
- Sherburne County is one of several Central/North Central Minnesota counties where the amount of irrigated agricultural acres and quantity of groundwater used for irrigation purposes has increased significantly within the last decade. It is recommended that work continue with partnering state agencies to develop a comprehensive understanding of the overall impacts this practice has on the surface and groundwater resources of the county.

We look forward to our continued water quality partnership with Sherburne County. It is through the work of locally led efforts like the LWMP where progress can be achieved in restoring and protecting the health of Minnesota's surface waters. Please feel free to contact me at 218-316-3901 or phil.votruba@state.mn.us if you have any questions.

Sincerely,



Phil Votruba
State Program Administrator Principal
Brainerd Office
Watershed Division

PV:dlp

cc: Jason Weirnerman, Minnesota Board of Water and Soil Resources
Juline Holleran, MPCA
Laurel Mezner, MPCA
File

Appendix B: DNR Public Waters and Wetlands, Sherburne County

STATE OF MINNESOTA

DEPARTMENT OF NATURAL RESOURCES

Pursuant to Minnesota Statutes, Section 105.391, Subd. 1, the Commissioner of Natural Resources hereby publishes the final inventory of Protected (i.e. Public) Waters and Wetlands for Sherburne County. This list is to be used in conjunction with the Protected Waters and Wetlands Map prepared for Sherburne County. Copies of the final map and list are available for inspection at the following state and county offices:

DNR Regional Office, Brainerd
DNR Area Office, St. Cloud
Sherburne SWCD
Sherburne County Auditor

Dated: 25 June 84

STATE OF MINNESOTA
DEPARTMENT OF NATURAL RESOURCES

JOSEPH N. ALEXANDER, Commissioner

By: 

**DEPARTMENT OF NATURAL RESOURCES
DIVISION OF WATERS
FINAL DESIGNATION OF PROTECTED WATERS AND WETLANDS WITHIN
SHERBURNE COUNTY, MINNESOTA.**

A. Listed below are the townships in Sherburne County and the township/range numbers in which they occur.

<u>Township Name</u>	<u>Township #</u>	<u>Range #</u>
Baldwin	35	26
Becker	33;34	28;29
Big Lake	32;33	27;28
Blue Hill	35	27
Clear Lake	33;34	29;30
Elk River	32;33	26
Haven	35	30;31
Livonia	34	26
Orrock	34	27
Palmer	35	29
Santiago	35	28

B. PROTECTED WATERS

1. The following are protected waters:

<u>Number and Name</u>	<u>Section</u>	<u>Township</u>	<u>Range</u>
71-1 : Twin Lakes	19;24	33	25;26
71-13 : Orono Lake	29,30,31,32,33	33	26
71-15 : Rice Lake	4;33	33;34	26
71-16 : Fremont Lake	3,4,9,10	34	26
71-25 : Unnamed	17	34	26
71-26 : Unnamed	17,20	34	26
71-29 : Stone Lake	25,36	34	26
71-36 : Long Pond	22,23	35	26
71-40 : Sandy Lake	25,36	35	26
71-41 : Cantlin Lake	28,33	35	26
71-46 : Diann Lake	31,32	35	26
71-53 : Lake of the Woods	30	34	26
71-55 : Elk Lake	30,31;36	35	26;27
71-56 : Mud Lake	1,2	33	27
71-57 : Birch Lake	2,11	33	27

<u>Number and Name</u>	<u>Section</u>	<u>Township</u>	<u>Range</u>
71-67 : Eagle Lake	6;30,31,32	33;34	27
71-68 : Josephine Lake	3,10	34	27
71-69 : Ann Lake	15,21,22	34	27
71-72 : Unnamed	26	34	27
71-74 : Unnamed	35	34	27
71-75 : Unnamed	3;34	34;35	27
71-76 : Unnamed	23,26	35	27
71-78 : Rice Lake	26,27,34,35	35	27
71-79 : Unnamed	34	35	27
71-81 : Mitchell Lake	18;13,24	33	27;28
71-82 : Big Lake	18,19;24	33	27;28
71-83 : Keller Lake	19,30;24,25	33	27;28
71-84 : Johnson Slough	6;1	34	27;28
71-85 : Big Mud Lake	7;12	34	27;28
71-86 : Unnamed	19;24	34	27;28
71-96 : Thompson Lake	11,12,13,14	33	28
71-111: Jim Lake	27,34	35	28
71-115: Unnamed	25,26	35	28
71-118: Boyd Lake	18,19;13,24	35	28;29
71-123: Camp Lake	9,16	34	29
71-124: Unnamed	10,15	34	29
71-125: Prairie Lake	15	34	29
71-141: Elk Lake	3,4;33,34	34;35	29
71-142: Rice Lake	3,9,10	35	29
71-145: Julia Lake	22,23,27	35	29
71-146: Briggs Lake	22,27,28	35	29
71-147: Rush Lake	27,34	35	29
71-148: Unnamed	1,11,12	34	30
71-149: Stickney Lake	2,10,11	34	30
71-152: Unnamed	10	34	30
71-153: Clear Lake	10,11,14	34	30
71-157: Cater Lake	1;36	34;35	30
71-158: Pickerel Lake	3,4;34	34;35	30
71-159: Long Lake	4;33,34	34;35	30
71-175: Unnamed	1	34	27
71-176: Unnamed	6	34	27
71-177: Unnamed	6	34	27
71-178: Unnamed	15	34	27
71-179: Unnamed	15	34	27
71-180: Unnamed	21	34	27
71-181: Unnamed	21	34	27

<u>Number and Name</u>	<u>Section</u>	<u>Township</u>	<u>Range</u>
71-182: Unnamed	22	34	27
71-183: Unnamed	29	34	27
71-185: Unnamed	3,4	35	27
*71-187: Unnamed	20,21	35	27
71-188: Unnamed	22	35	27
71-189: Unnamed	23	35	27
71-190: Unnamed	26	35	27
71-191: Unnamed	34	35	27
71-192: Unnamed	36	35	27
71-201: Unnamed	31;36	35	27;28
71-202: Unnamed	5,6;31,32	34;35	29
71-211: Dodd's Quarry #20	6	35	30
71-225: Unnamed	7	34	26
71-292: Unnamed	9	34	27
71-294: Unnamed	34	35	27
71-295: Unnamed	33,34	35	27
71-296: Unnamed	28,33	35	27
71-297: Unnamed	30	35	27
71-310: Unnamed	31	35	27
71-311: Unnamed	26	35	28
71-312: Unnamed	26	35	28
71-366: Unnamed	9,16	35	28
71-367: Unnamed	16,17	35	27
48-10 : Rice Lake	2;25,26,35,36	35;36	27

2. The following natural and altered natural watercourses are protected waters:

<u>Name</u>	<u>Section</u>	<u>From</u>		<u>To</u>		
		<u>Township</u>	<u>Range</u>	<u>Section</u>	<u>Township</u>	<u>Range</u>
Mississippi River	1	35	31	24	32	26
Trott Brook	2(Basin 4)	33	26	1	32	26
	1	32	26	12	32	26
Elk River (ER)	2	30	35	4	32	26
Unnamed to Orono Lake	20(Basin 265)	33	26	32(Basin 13)	33	26
Tibbits Brook	21	34	26	21	34	26
	28	34	26	5	33	26
	14	33	27	23	33	27
St. Francis River (SFR)	5	35	28	7	33	27

<u>Name</u>	<u>Section</u>	<u>Township</u>	<u>Range</u>	<u>Section</u>	<u>Township</u>	<u>Range</u>
Battle Brook	3	35	27	3	35	27
	1	35	27	1	34	27
Rum River (RR)	3	35	26	12	35	26
	12	35	26	1	35	26
Unnamed to RR	3	35	26	3	35	26
Unnamed to Blue Lake	35	35	26	36	35	26
Unnamed to ER	31(Basin 67)	34	27	1	33	28
Unnamed to ER	17	34	28	19	34	28
Lilly Creek	34(Basin 147)	35	29	34(Basin 141)	35	29
Unnamed to Rush Lake	27(Basin 146)	35	29	27(Basin 147)	35	29
Briggs Creek	1	35	29	22(Basin 146)	35	29
Rice Creek (RC)	9(Basin 142)	35	29	32	35	29
Stony Brook	3	35	29	3	35	29
	2	35	29	3(Basin 142)	35	29
Unnamed to Rice Lake	3	35	29	3(Basin 142)	35	29
Unnamed to RC	13	35	30	29	35	29
Unnamed to ER	8(Hwys. 10 & 52)	35	30	15	35	30
Unnamed to ER	5(Basin 120)	34	29	4(Basin 141)	34	29
Unnamed to ER	4(Basin 119)	34	29	3	34	29

C. WETLANDS

The following are wetlands:

<u>Number and Name</u>	<u>Section</u>	<u>Township</u>	<u>Range</u>
71-2 : Twin Lake	30;24,25	34	25;26
71-3 : Kliever Marsh	1,2	32	26
71-4 : Unnamed	2	33	26
71-5 : Unnamed	12	33	26
71-6 : Unnamed	12,13	33	26

<u>Number and Name</u>	<u>Section</u>	<u>Township</u>	<u>Range</u>
71-7 : Unnamed	1	33	26
71-8 : Eagle Lake	13,14	33	26
71-9 : Unnamed	16,17	33	26
71-11 : Unnamed	23	33	26
71-17 : Unnamed	6,7	34	26
71-18 : Unnamed	6,7;1,12	34	26;27
71-19 : Unnamed	8	34	26
71-20 : Unnamed	8	34	26
71-22 : West Hunter Lake	13,24	34	26
71-23 : East Hunter Lake	13,24	34	26
71-24 : Unnamed	17	34	26
71-27 : Unnamed	24,25	34	26
71-30 : Unnamed	36	34	26
71-31 : Unnamed	3;34	34;35	26
71-32 : Unnamed	4;33	34;35	26
71-33 : Unnamed	11	35	26
71-34 : Unnamed	13	35	26
71-35 : Unnamed	20	35	26
71-37 : Unnamed	23	35	26
71-38 : Unnamed	23,24	35	26
71-39 : Mud Lake	25	35	26
71-42 : Unnamed	29	35	26
71-43 : Unnamed	29,30,31,32	35	26
71-44 : Little Diamond Lake	31	35	26
71-45 : Helene Lake	31	35	26
71-47 : Unnamed	32	35	26
71-48 : Unnamed	33,34	35	26
71-49 : Unnamed	34	35	26
71-50 : Unnamed	34	35	26
71-51 : Unnamed	34	35	26
71-52 : Unnamed	6;1	34	26;27
71-54 : Unnamed	19;24	35	26;27
71-60 : Unnamed	4	33	27
71-61 : Unnamed	10	33	27
71-62 : Unnamed	18	33	27
71-63 : Preusse Lake	21	33	27
71-65 : Unnamed	28,29	33	27
71-70 : Unnamed	18	34	27
71-71 : Unnamed	19	34	27
71-77 : Unnamed	23,24	35	27
71-80 : Unnamed	18;13	33	27;28

<u>Number and Name</u>	<u>Section</u>	<u>Township</u>	<u>Range</u>
71-87 : Unnamed	30;25	34	27;28
71-88 : Unnamed	6;36;31	35;36	27;28
71-89 : Unnamed	3,10	33	28
71-90 : Unnamed	8	33	28
71-92 : Unnamed	8,17	33	28
71-93 : Bucks Lake	2,3,10,11	33	28
71-94 : Hidden Lake	11	33	28
71-95 : Unnamed	11	33	28
71-97 : Blacks Lake	13,24	33	28
71-98 : Wood Lake	14,15	33	28
71-101: Beulah Pond	24	33	28
71-104: Unnamed	13	34	28
71-105: Danzel Slough	13,24	34	28
71-106: Unnamed	23	34	28
71-107: Duffy Lake	23,26	34	28
71-109: Lundberg Slough	25,26	34	28
71-110: Fredrickson Slough	36	34	28
71-112: Unnamed	5	35	28
71-113: Unnamed	8	35	28
71-114: Unnamed	8	35	28
71-116: Clitty Lake	19,30;24,25	34	28;29
71-117: Unnamed	7;12	35	28;29
71-119: Unnamed	4,9	34	29
71-120: Unnamed	5,6,7,8	34	29
71-122: Unnamed	8,17	34	29
71-126: Masford Lake	16,17,20,21	34	29
71-127: Unnamed	17,18	34	29
71-128: Unnamed	17,20	34	29
71-129: Jones Lake	17,18,19,20	34	29
71-130: Unnamed	19	34	29
71-131: Unnamed	19,20	34	29
71-132: Crescent Lake	20	34	29
71-133: Unnamed	20,29,30	34	29
71-134: Unnamed	20,21,28,29	34	29
71-135: Unnamed	21	34	29
71-137: Unnamed	21,22	34	29
71-138: Unnamed	21,28	34	29
71-139: Unnamed	29	34	29
71-140: Unnamed	33	34	29
71-143: Unnamed	7,18	35	29
71-144: Unnamed	9	35	29

<u>Number and Name</u>	<u>Section</u>	<u>Township</u>	<u>Range</u>
71-150: Unnamed	3,4,9	34	30
71-151: Unnamed	10	34	30
71-154: Unnamed	11	34	30
71-155: Unnamed	11,12	34	30
71-156: Unnamed	15	34	30
71-160: Unnamed	1	35	30
71-161: Unnamed	10	35	30
71-162: Unnamed	27	35	30
71-163: Unnamed	28	35	30
71-165: Unnamed	32	35	30
71-166: Unnamed	34	35	30
71-167: Unnamed	34	35	30
71-168: Unnamed	27,34,35	35	30
71-170: Unnamed	14	33	26
71-171: Unnamed	15	33	26
71-172: Unnamed	15	35	26
71-173: Unnamed	26,27	35	26
71-174: Unnamed	1	33	27
71-195: Unnamed	7	34	28
71-197: Unnamed	7	35	28
71-198: Unnamed	19;24	35	28;29
71-199: Unnamed	17	35	28
71-200: Unnamed	19,30	35	28
71-205: Unnamed	10,15	35	29
71-206: Unnamed	13	35	29
71-208: Unnamed	24,25	35	29
71-210: Unnamed	14	34	30
71-213: Unnamed	15,22	35	30
71-214: Unnamed	20	35	30
71-216: Unnamed	2;35	34;35	30
71-217: Unnamed	1	35	30
71-218: Unnamed	13	35	30
71-224: Unnamed	10	34	28
71-228: Unnamed	10,15	35	26
71-229: Unnamed	16	33	27
71-237: Unnamed	29	34	28
71-238: Unnamed	25	33	26
71-239: Unnamed	27,34	33	26
71-241: Unnamed	14	33	26
71-242: Unnamed	18	34	26
71-244: Unnamed	30,31;25,36	35	25;26

<u>Number and Name</u>	<u>Section</u>	<u>Township</u>	<u>Range</u>
71-245: Unnamed	35,36	35	26
71-250: Unnamed	4	34	26
71-251: Unnamed	2	34	26
71-252: Unnamed	16,21	34	26
71-262: Unnamed	32,33	33	26
71-265: Unnamed	20	33	26
71-280: Unnamed	7	33	26
71-314: Unnamed	30	35	28
71-329: Unnamed	9,10	34	30
71-337: Unnamed	9,16	35	26
71-338: Unnamed	16,17	35	26
71-339: Unnamed	16,21	35	26
71-342: Unnamed	21,22	35	26
71-344: Unnamed	21	35	26
71-349: Unnamed	3	35	28
71-351: Unnamed	7	35	28
71-358: Unnamed	16	35	29
71-361: Unnamed	5	35	29
71-363: Unnamed	30	33	27
71-368: Unnamed	12	33	26
71-369: Unnamed	19	33	27
*2-692 : Unnamed	31;36	34	25;26

*This is corrected from a previous typographic and/or cartographic error.

Appendix C: Other Watercourses Resolution

Resolution No. 17.073

Local Water Resources Riparian Protection in Sherburne County

Whereas, Minnesota statues 103F.48 requires Soil and Water Conservation Districts (SWCDs) in consultation with local water management authorities, to develop, adopt, and submit to each local water management authority within its boundary a summary of watercourses for inclusion in the local water management plan.

Whereas, watercourses defined by M.S. 103F.48 consisting of public waters and public ditches identified on the Minnesota Department of Natural Resources Buffer Protection Map require a vegetative buffer or alternative riparian water quality practice.

Whereas, the Board of Water and Soil Resources (BWSR) has adopted the Local Water Resources Riparian Protection ("Other Watercourses") Policy, dated August 25, 2016, which identifies steps SWCDs are required to take in developing said inventory.

Whereas, Sherburne SWCD has met with local water management authorities on May 25, 2017, to discuss watershed data, water quality data and land use information as a criteria in development of this list.

Whereas, Sherburne SWCD has reviewed numerous map options and determined that producing a map of all the watercourses meeting the eligibility criteria would not be inclusive of all watercourses where water quality would benefit from the installation of a buffer or filter strip.

Whereas, the Sherburne SWCD determined that the rational for inclusion of "other watercourses" is to be inclusive of all watercourses where water quality would benefit from the installation of a buffer or filter strip.

Therefore be it resolved that, the summary of watercourses or "other watercourses" for Sherburne County shall be descriptive in format instead of in map format.

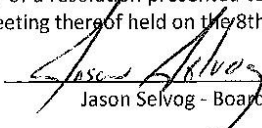
Be it further resolved that, to comply with MS 103F.48, the following text shall describe "other watercourses" in Sherburne County for the purpose of inclusion in future local water management authorities updates within Sherburne County and to guide Sherburne SWCD decision making in order to further the goal of protecting riparian areas:

- Any area where water flow concentrates (permanent or intermittent flows) and water quality from the contributing watershed would benefit from a vegetative buffer or alternative riparian water quality practice installed voluntarily by the landowner and for which the Sherburne SWCD will seek incentives to assist the landowner(s) to install and maintain a vegetative buffer in order to:
 - slow the rate of water runoff and overland flows in order to maintain the stability and environmental integrity of the watercourse,
 - sustain the existing land use of the contributing drainage area by maintaining or improving water quality,
 - reduce water runoff by encouraging infiltration,
 - reduce soil loss from the contributing watershed to the rate of tolerable soil loss ("T" rate) or below,
 - provide complementary values of water quality, hydrologic stability, soil conservation, fish and wildlife habitat, and ecological protection,
 - improve the quality of downstream receiving waters, and
 - other values as may be mutually determined by the SWCD and the landowner.

Be it further resolved that, it is the policy of the Sherburne SWCD that watercourses may be identified by a variety of mapping and remote sensing methods which may change over time but must be verified by on site field investigation conducted by the SWCD in cooperation with the landowner.

CERTIFICATION

I do hereby certify that the foregoing resolution is a true and correct copy of a resolution presented to and adopted by the Sherburne Soil and Water Conservation District at a duly authorized meeting thereof held on the 8th of June, 2017.


 Jason Selvog - Board of Supervisors Chair

Appendix D: LWMP Public Hearing Notice and Comments

Note: LWMP Public Hearing documented as item #4 on 11/21/17 agenda.

PLEASE NOTE: THESE MINUTES ARE IN DRAFT FORM AND ARE NOT TO BE PUBLISHED IN ANY MANNER UNTIL THEY ARE APPROVED BY THE SHERBURNE COUNTY BOARD OF COMMISSIONERS.



Sherburne County Board of Commissioners County Board Meeting Minutes November 21, 2017

1. Call to Order

The Sherburne County Board of Commissioners met in regular session on November 21, 2017, at the Sherburne County Government Center in the City of Elk River, Minnesota with all Commissioners present. Call to order by the Chair was at 9:00 a.m. followed by a moment of silence and the Pledge of Allegiance to the Flag.

- Petersen/Schmiesing unanimous to approve the agenda for November 21, 2017 as presented.

2. Consent Agenda

Dolan/Fobbe unanimous to approve the Consent Agenda as follows:

1. Review and Approve Minutes: November 7, 2017 - County Board Meeting
Approved as presented.
2. Review and Approve Minutes: November 7, 2017 - County Board Workshop Meeting
Approved as presented.
3. Minnesota Housing Participation Program Administration
Approved as presented.
4. Premises Permit Renewal for Zimmerman Fire Department Relief Association Administration
Approved Premises Permit renewal for Zimmerman Fire Department Relief Association at Ridgewood Bay Resort, 14255 288th Ave. NW, Zimmerman, MN 55398 noting this is the yearly report as required in the Sherburne County Ordinance.
5. Accept TLID 2017 Annual Report Administration
Accepted the Three Lake Improvement District annual report as presented.
6. MCAPs technical support contract Attorney
Approved to ratify the contract (on file in the County Attorney's Department) between MCCC and Strategic Technologies Incorporated effective January 1, 2018 for five years with a renewal of up to three years.
7. Authorization to pay additional cost on clean up tax forfeited parcel 10-103-4300 Auditor/Treasurer
Approved payment of \$2,000 to Steinbrecher Companies Inc., for additional cost incurred in the cleanup of tax forfeited parcel #10-103-4300 with funds to be taken from Account # 23-873-000-0000-6350.
8. Accept the October 2017 Auditor-Treasurer Monthly report. Auditor/Treasurer
Accepted report as presented.

PLEASE NOTE: THESE MINUTES ARE IN DRAFT FORM AND ARE NOT TO BE PUBLISHED IN ANY MANNER UNTIL THEY ARE APPROVED BY THE SHERBURNE COUNTY BOARD OF COMMISSIONERS.

- | | |
|---|------------------------------|
| <p>9. <u>Set date for 2017 Tax Forfeited Land Sale</u>
 Approved to set date of December 13, 2017 at 10:00 a.m. for sale and authorize publication of required information for two consecutive weeks in the official County newspaper.</p> | <p>Auditor/Treasurer</p> |
| <p>10. <u>Set date for closed bid forfeited land sale</u>
 Approved sale to be held 30 days from date of notification of adjacent property owners.</p> | <p>Auditor/Treasurer</p> |
| <p>11. <u>Request County Board appoint education representative to Community Corrections Advisory Board</u>
 Approved appointment of Angie Charboneau-Folch as education representative to Community Corrections Advisory Board, effective immediately.</p> | <p>Community Corrections</p> |
| <p>12. <u>Proclamation: Adoption Month</u>
 Approved Proclamation of November as Adoption Month in Sherburne County.</p> | <p>HHS</p> |
| <p>13. <u>Microsoft agreement for Sheriff staff</u>
 Approved expenditure of \$32,820.00 for Sheriff EA for Microsoft Cloud mail and future services; funds included in the 2017 budget.</p> | <p>IT</p> |
| <p>14. <u>Approve the Natural Resource Management Services Agreement with Sherburne Soil and Water Conservation District</u>
 Approved 2018 Natural Resource Management Services Agreement with Sherburne Soil and Water Conservation District with funds to be taken from Account # 01-521-000-0000-6277 for this budgeted request.</p> | <p>Public Works</p> |
| <p>15. <u>Approve MnDOT Agreement 1029573 - Painting the Signal At TH 24 and CSAH 8</u>
 Approved Resolution #112117-AD-1803 to enter into Agreement 1029573, pending County Attorney approval, with funds to be taken from Account # 03-312-000-0000-6347 for this budgeted project request.</p> | <p>Public Works</p> |
| <p>16. <u>Approval of the County 2017 Emergency Operations Plan (EOP)</u>
 Approved as presented.</p> | <p>Sheriff</p> |
| <p>17. <u>Approval of the 2017 UASI Grant and Grant Funds</u>
 Approved acceptance of the 2017 Urban Area Security Initiative (UASI) Grant awarded to Emergency Services in the amount of \$51,800.00; funds to be deposited into Account # 01-281-289-2017-5392.</p> | <p>Sheriff</p> |
| <p>18. <u>Accept a donation from The Eddy Family Foundation to the Sheriff's Office Reserve Unit</u>
 Approved acceptance of a \$4,000.00 donation from the Eddy Family Foundation to the Sheriff's Office Reserve Unit; funds to be deposited into Account # 01-201-223.5752.</p> | <p>Sheriff</p> |
| <p>19. <u>Accept a donation from The Eddy Family Foundation to the Sheriff's Office Mounted Patrol Unit</u>
 Approved acceptance of a \$2,000.00 donation from the Eddy Family Foundation to the Sheriff's Office Mounted Patrol Unit; funds to be deposited into account # 01-201-223.5752.</p> | <p>Sheriff</p> |

PLEASE NOTE: THESE MINUTES ARE IN DRAFT FORM AND ARE NOT TO BE PUBLISHED IN ANY MANNER UNTIL THEY ARE APPROVED BY THE SHERBURNE COUNTY BOARD OF COMMISSIONERS.

- 20. Accept a donation from The Eddy Family Foundation to the Sheriff's Office Sheriff
 Approved acceptance of a \$4,000.00 donation from the Eddy Family Foundation to the Sheriff's Office; funds to be deposited into account # 01-201.5752.
- 21. Approve a medical leave extension for a Sheriff/Jail employee Sheriff
 Approved with leave extension to end December 29, 2017, or sooner, contingent on additional medical information.
- 22. 11-01-17 HHS OBO Warrant HHS
 Accepted payment of November 1, 2017 - \$5,225.78
- 23. Commissioner & Manual Warrants for approval Auditor/Treasurer
 Accepted payments as follows:
 - November 3, 2017 Manual Warrants - \$10,557,007.07
 - November 2, 2017 Tax Settlement Period 2 - \$891,580.24
 - November 10, 2017 - \$644,923.42
 - November 3, 2017 - \$248,795.63
 - November 8, 2017 Manual Warrants BMO P-card - \$59,919.70
 - November 10, 2017 Manual Warrants - \$22,523.59
 - October 31, 2017 Manual Warrants - \$2,821.50

3. Announcements

- An EDA Special Meeting is scheduled on December 20th at 8:30 a.m. in the County Board Room.

4. Public Hearing - Comprehensive Local Water Management Plan

Francine Larson and Dan Cibulka, SWCD

Dan Cibulka, SWCD, provided a brief review of the Sherburne County Comprehensive Local Water Management Plan. At 9:04 a.m., the Chair opened a Public Hearing to take comment on said plan. There was no one present to comment and no written comments received.

The Board Chair closed the Public Hearing at 9:05 a.m. Mr. Cibulka informed the Board that in February or March of 2018, they plan to return to the County Board to request approval of the plan. No action taken.

5. Representative Nick Zerwas - 2018 Legislative Preview

Representative Nick Zerwas

2018 legislative preview given noting the 2018 Session starts the third week in February. No action taken.

6. At 9:32 a.m., the Chair recessed the Regular Meeting and opened the Regional Rail Authority Meeting.

At 9:57 a.m., the Chair adjourned the Regional Rail Authority Meeting and Reconvened the Regular Meeting.

7. River Crest Presentation

Maureen Wilkus, Jodi Heurung, Mary Jo Cobb: HHS

Information provided on the River Crest housing facility in southeast St. Cloud. No action taken.

8. Transportation of Children & Youth in Foster Care Placement

Jodi Heurung, Mary Jo Cobb: HHS

Information provided on the transportation of Children & Youth in Foster Care Placement. New legislation requires counties and school districts to develop agreements for the provision of

PLEASE NOTE: THESE MINUTES ARE IN DRAFT FORM AND ARE NOT TO BE PUBLISHED IN ANY MANNER UNTIL THEY ARE APPROVED BY THE SHERBURNE COUNTY BOARD OF COMMISSIONERS.

transportation services. Discussion was held regarding the possibility of agreements with other school districts in Sherburne County. Jodi Heurung informed the Board there is potential funding for the County to recoup some costs if the County has agreements in place with school districts.

Fobbe/Dolan unanimous to approve an agreement between Sherburne County and ISD 742 for the transportation of children and youth in foster care placement. Funding is included in the 2018 HHS budget.

At 10:09 a.m., the Chair declared a recess and reconvened the meeting at 10:16 a.m.

9. Requesting Authorization to apply for Election Equipment Grant funding.

Diane Arnold: Auditor/Treasurer

Discussion of application for Election Equipment Grant.

Dolan/Fobbe unanimous to approve Resolution #112117-AD-1802, authorizing application for the election equipment grant to consist of one central count scanner for absentee ballots and 80 Poll Pads for the Cities and Townships to be used in the 2018 election year. This is a funds match grant totaling \$105,000 to be deposited in Acct. # 01-065-000-0000-5400 and carry-over Election funds in the amount of \$62,200.00 from account # 01-065-000-0000-6600 not to exceed County share of 25% and 50%.

10. County Administrator Summary Evaluation Review

Tammy Bigelow: Administration

Presentation of the County Administrator Summary Evaluation Review.

Schmiesing/Petersen unanimous to approve the rating of Exceeds Standards for the performance evaluation conducted by the Sherburne County Board of Commissioners for County Administrator Steve Taylor for the period of November 4, 2016 to November 4, 2017. While the County Board approved an exceeds standards rating, there was mutual agreement that Mr. Taylor would receive a 6% salary increase resulting in a \$2,646.00 savings for the County. The 6% salary increase is a \$9,074.00 annual salary adjustment.

11. Commissioner Correspondence, Committee Reports, Upcoming Meetings, Future Agenda Items (November 7, 2017 – November 20, 2017):

Commissioner Dolan – Hwy 25 Coalition (2 meetings) and quarterly MAGIC Meeting

Commissioner Petersen – Minnesota Inter-County Association, Upcoming meetings: Options Board on November 27th, Crime Lab Meeting on November 28th and a 7-W Transportation Meeting on December 1st.

Commissioner Schmiesing – Minnesota Inter-County Association and Minnesota Counties Intergovernmental Trust Board of Directors

Commissioner Fobbe – Soil and Water Conservation District Meeting, ribbon cutting for a business in Princeton, and Tri-CAP Workshop and Meeting

Commissioner Burandt – Elk River Watershed Meeting

12. At 10:31 a.m., the Chair adjourned the Regular Meeting

Claims approved through warrants, resolutions, or contracts, totaling the following amounts, were paid as follows:

November 1, 2017

\$	2,821.02	OBO Innovative
\$	467.29	OBO Walmart
\$	1,937.47	19 payments less than \$300

November 3, 2017

PLEASE NOTE: THESE MINUTES ARE IN DRAFT FORM AND ARE NOT TO BE PUBLISHED IN ANY MANNER UNTIL THEY ARE APPROVED BY THE SHERBURNE COUNTY BOARD OF COMMISSIONERS.

\$ 2,785.00 Agency Collections
\$ 1,861,672.27 Taxes & Penalties Fund
\$ 8,692,549.80 School Districts Collections

November 2, 2017

\$ 891,580.24 School Districts Collections

November 10, 2017

\$ 145,058.82 General Revenue Fund
\$ 264,219.02 Public Works Fund
\$ 14,297.04 Solid Waste Fund
\$ 59,553.60 Jail Commissary Fund
\$ 204.97 Sherco Regional Rail Authority
\$ 93,371.68 Justice Center Enterprise Fund
\$ 62,842.90 Agency Collections
\$ 5,375.82 Taxes & Penalties Fund

November 3, 2017

\$ 191,213.55 General Revenue Fund
\$ 26,615.07 Public Works Fund
\$ 2,467.74 Law Library Fund
\$ 490.64 Solid Waste Fund
\$ 3,250.48 Jail Commissary Fund
\$ 6,653.50 Capital Proj 2008-Government
\$ 17,515.07 Justice Center Enterprise Fund
\$ 290.08 Agency Collections
\$ 299.50 Taxes & Penalties Fund

November 8, 2017

\$ 55,308.75 General Revenue Fund
\$ 2,709.10 Public Works Fund
\$ 135.24 Solid Waste Fund
\$ 404.57 Jail Commissary Fund
\$ 1,362.04 Justice Center Enterprise Fund

November 10, 2017

\$ 18,146.32 General Revenue Fund
\$ 4,377.27 Agency Collections

October 31, 2017

\$ 2,621.50 Agency Collections
\$ 200.00 Taxes & Penalties Fund

Barbara Burandt, Chairperson

Steve Taylor, Administrator

Date

Date



Brainerd Office | 7678 College Road | Suite 105 | Baxter, MN 56425 | 218-828-2492
800-657-3864 | Use your preferred relay service | info.pca@state.mn.us | Equal Opportunity Employer

January 4, 2018

Sherburne County Comprehensive Local Water Management Plan

Agency/organization: Minnesota Pollution Control Agency (MPCA)

Submitted by (name): Phil Votruba (phone) (218) 316-3901 (email) phil.votruba@state.mn.us

Submission deadline: January 19, 2018

1. The MPCA has reviewed the final draft of the water management plan for Sherburne County. The following is submitted for the Board's consideration regarding the priority concerns selected:

- The plan does not violate any statutory or rule requirements administered by our agency.
- The plan violates M.S. _____ administered by our agency. *Explanation of statute violation: _____*
- The plan violates M.R. _____ administered by our agency. *Explanation of rule violation: _____*

2. The MPCA recommends the board:

- Approve the entire plan as submitted
- Disapprove the entire plan as submitted
- Disapprove parts of the plan as cited: _____

3. The MPCA would like to offer the following comments for the board's consideration when reviewing and acting on this local water plan update:

The Sherburne County 2018-2022 *Local Water Management Plan* (LWMP) is a comprehensive and well written LWMP. The MPCA has just a few minor comments that we would like to be considered in the final revision of the LWMP. These comments are as follows:



Brainerd Office | 7678 College Road | Suite 105 | Baxter, MN 56425 | 218-828-2492

800-657-3864 | Use your preferred relay service | info.pca@state.mn.us | Equal Opportunity Employer

Sherburne SWCD Response 2/13/2018

- Page 16, first paragraph – there appears to be a misspelling in the sentence “Thus, protecting and enhancing tree canopy cover is a high priority for Sherburne Count” **This misspelling has been corrected.**
- On pages 24, 65 and Acronym page – Consider adding an S to the word WRAPS on pages 24 and 65 and spelling out Watershed Restoration and Protection Strategy on the Acronym page. **Changes have been made.**
- Page 24, in Strategic Planning/Reporting section – Consider revising the bullet for the Elk River TMDL to Elk River Watershed - Multiple Impairments TMDL Project. In addition consider adding a separate bullet for the Upper Mississippi River Bacteria TMDL Study and Protection Plan which addressed select bacteria tributary impairments within the Upper Mississippi River Basin, which included streams in Sherburne County. **Thanks for the clarification – the ERW study title has been changed as recommended and the Upper Miss River study has been added.**
- Page 27, Table 1 - There are two separate columns for the MPCA. Is this by design or can this be combined into one column? **This was an oversight – the two columns have been combined.**
- Page 30, end of second paragraph (Rum River TMDL). Consider adding “Watershed” after Rum River (e.g. Rum River Watershed TMDL). As it is currently worded it gives the impression the TMDL is specific to the Rum River. **Good catch, this change has been made.**
- Pages 30 -31, Table 3 (Sherburne County impaired lakes or reservoirs) and Table 4 (Sherburne County impaired river and stream segments). Consider revising these tables as needed to reflect the latest impairment status of the surface water resources within Sherburne County. See attached spreadsheet for suggested revisions/considerations for these tables. **The spreadsheet you provided was very helpful. The tables in the LWMP should be updated with the most recent information now.**
- General comment - The LWMP is a thorough and informative document that is easy to read and understand. Consider adding some photos within the county to compliment the overall LWMP and to help showcase the County’s resources. **Thanks for the comments and advice! Several photos have been added to the document as recommended.**

Thank you for the opportunity to review the LWMP. We look forward to our continued water quality partnership with Sherburne County. It is through the work of locally led efforts like the LWMP where implementation progress can be achieved in protecting and restoring the health of Minnesota water resources.

Sincerely,

Reed Larson
North Watershed Section Manager
Watershed Division

cc: Dan Cibulka, Sherburne SWCD
Jason Weirnerman, BWSR
Rebecca Flood, MPCA
Juline Holleran, MPCA
Laurel Mezner, MPCA
Phil Votruba, MPCA

From: Berg, Jeffrey (MDA) [<mailto:jeffrey.berg@state.mn.us>]
Sent: Friday, January 19, 2018 10:51 AM
To: Cibulka, Daniel - NRCS-CD, Elk River, MN <Daniel.Cibulka@mn.nacdnet.net>; Weinerman, Jason (BWSR) <jason.weinerman@state.mn.us>
Cc: Berg, Jeffrey (MDA) <jeffrey.berg@state.mn.us>
Subject: Sherburne County Comprehensive Local Water Management Plan

Greeting Jason and Dan,

The MDA recommends approval of the Sherburne County Comprehensive Local Water Management Plan. The following revisions should be considered.

Page 45, last paragraph:

- Note that the Nitrogen Fertilizer Management Plan (NFMP) was adopted in 2015. (2017 is noted; perhaps this is referencing that the MDA is currently drafting the Nitrogen Fertilizer Rule (NFR), which is based on the NFMP?) **Thank you for the clarification, the wording has been changed to accurately state the NFMP was adopted in 2015.**
- The goal is to implement “Nitrogen fertilizer BMPs” (versus “nitrate BMPs”) and alternative management tools, on 80% of cropland... **This text has been changed from nitrate BMPs to “...nitrogen fertilizer BMPs and alternative management tools...”**
- In the NFMP, locally formed groups are called local advisory teams (LAT). (“Local advisory group” & “Task force” is noted on page 45; and is this the same as the “Nitrate Task Force” noted in the Objective One table on page 60?) **Yes, the terms all reference the LAT but were mistakenly referred to as groups or task forces. All references to this group have been changed to LAT for consistency.**
- It could be noted that MDA also evaluates nitrate results drinking water supply management areas (DWSMA), and LAT may be formed in these areas as well. (I think Clear Lake DWSMA is included in the townships noted in the plan?) **This information has been included in the same block of text noted above (now on page 46 of the LWMP document).**

Here are some reference sites:

NFMP: <http://www.mda.state.mn.us/chemicals/fertilizers/nutrient-mgmt/nitrogenplan/nfmpabout.aspx> or <http://www.mda.state.mn.us/nfmp>

NFR fact sheet: <https://www.mda.state.mn.us/~media/Files/chemicals/nfmp/draftnfertrulefs.pdf>

Thanks for the opportunity to review the plan. Let me know if you have questions.

Jeff

Water Policy Specialist
Pesticide and Fertilizer Management Division

 **DEPARTMENT OF
AGRICULTURE**
www.mda.state.mn.us/

625 Robert Street North, St. Paul, MN 55155
651 201 6338

Sherburne County Local Water Management Plan

Agency/organization **Minnesota Department of Health**

Submitted by (name): George Minerich (phone)(320) 223-7314
(email): george.minerich@state.mn.us

Submission deadline: February 16, 2018

- 1. The MN Department of Health has reviewed the final draft of the water management plan for Sherburne County. The following is submitted for the Board's consideration regarding the priority concerns selected:**

- The plan does not violate any statutory or rule requirements administered by our agency.
- The plan violates M.S. _____ administered by our agency. *Explanation of statute violation: _____*
- The plan violates M.R. _____ administered by our agency. *Explanation of rule violation: _____*

- 2. The MN Department of Health recommends that the board:**

- Approve the entire plan as submitted
- Disapprove the entire plan as submitted
- Disapprove parts of the plan as cited: _____

- 3. The MN Department of Health would like to offer the following comments for the board's consideration when reviewing and acting on this local water plan update:**

The MN Department of Health would like to commend Sherburne County for its recognition of the importance of protecting drinking and ground water resources. MDH looks forward to working with Sherburne County on this important initiative.