

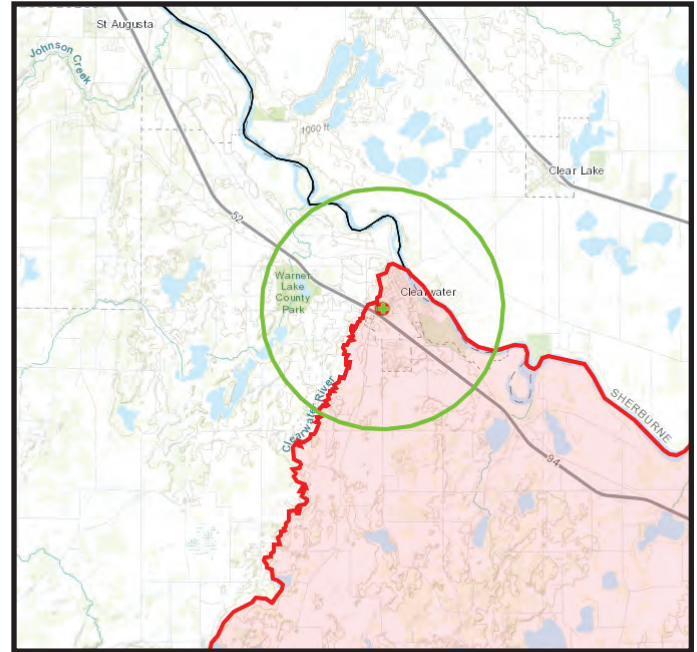
Woodpecker Activity Survey

Volunteers Needed to Conduct a Woodpecker Activity Survey

Natural resource and parks departments in Sherburne, Stearns and Wright Counties are partnering with the MN Department of Agriculture (MDA) to expand on survey efforts performed by volunteers in Sherburne County, to detect infestations of emerald ash borer (EAB).

EAB is an unprecedented, destructive forest pest that has decimated ash tree populations in hundred of communities throughout the Midwest and is currently spreading throughout MN. Most recently, an infestation was confirmed in Wright County.

Researchers have come to rely on the strong correlation between heavy woodpecker activity in ash trees in late winter and the presence of EAB larvae under the bark. Early detection is the key to stopping the damaging effects of an infestation.



Woodpecker Activity Training Session

Training will cover ash tree identification, emerald ash borer life cycle and identification, and a brief outdoor field training. Binoculars are required for survey work and training; each volunteer must furnish a pair for their own use.

Date: Friday, March 15th 2019

Time: 9:00am - 12:00pm

Location: Warner Park Nature Center
1485 County Road 143
Clearwater, MN 55320



Contact Gina Hugo at the Sherburne SWCD: 763-220-3434 or ghugo@sherburneswcd.org

Registration Deadline March 14th

Sherburne Soil and Water Conservation District
425 Jackson Ave NW 763-220-3434 www.sherburneswcd.org