

Nature Talks

Sherburne Soil and Water Conservation District

Nature Talks

January 2018

In This Issue

SWCD Tree Sale

Cost Share Programs

Poster Contest

Tree Care Advisors

Supervisor Elections

County Water Plan

AIS Grant Program

Free Nitrate Testing

Tree Sale Now Accepting Orders



As our Minnesota winter marches on, indulge in thoughts of spring and how you might mark the transition of seasons. Imagine starting a tradition with your family or friends that benefits the environment, wildlife and your property!

Planting bare root tree seedlings is affordable, easy, and good for you! Trees have many benefits, from improving air quality, saving energy, creating beauty to reducing

stress levels in people! For decades the Sherburne SWCD has been providing high quality bare root tree seedlings and transplants to landowners at a price that makes it feasible to plant multiple row windbreaks, living snowfences, privacy screens or wildlife plantings.

If tree planting is all new to you contact us! Our staff is here help you select varieties to meet your objectives and can assist with planning. We can also provide resources on planting methods and tree protection. This year 26 varieties of trees and shrubs are available. The species sold by the Sherburne SWCD are selected based on their performance in our soils and climate, as well as aesthetics, and benefits to wildlife.

The Sherburne SWCD tree sale is the perfect opportunity to insure the arrival of your trees at peak planting time. Orders are now being taken. To download an order form log on to www.sherburneswcd.org, email Andie at abumgarner@sherburneswcd.org or call us 763.241.1170 x 4.



SWCD Tree Sale

- 26 varieties of trees and shrubs
- Bare root seedlings
- Easy to plant, grow quickly
- Available for pick up in April
- Limited stock order today!

Conservation Cost Share Available for Sherburne County Landowners

Sherburne SWCD would like to remind county landowners of the technical and financial assistance opportunities that are available. Since 1944, the SWCD has worked with county landowners to protect soil, prairies, forests, wetlands, streams, lakes and groundwater from a variety of environmental stressors and pollutants. Staff are available to answer your conservation questions, visit your property for a site assessment, and provide technical assistance – many times at no cost to the landowner! Financial assistance is often available for conservation practices through state or county allocations and from successful grant applications which District employees pursue. In 2018, Sherburne SWCD will have three programs offering financial assistance (cost-share) for Sherburne County property owners.



Past SWCD Technicians working with a landowner

The first is a well-sealing program, which is made possible through funds obtained from the Clean Water Land & Legacy grant program. Abandoned or otherwise unused wells pose a hazardous risk to groundwater, as they are not monitored and can potentially transmit pollutants directly into drinking water sources. Older wells may not be well documented or their locations lost over time. State of Minnesota laws require the disclosure of wells whenever property is sold or transferred, and that wells not being used be sealed properly by a licensed well contractor. If you know of, or discover, an abandoned well on your property Sherburne SWCD will pay for 50% of eligible sealing costs not to exceed \$1,000.



Present day SWCD Resource Specialist, Gina Hugo, speaking with a landowner

A second cost-share program available to county residents is through an Elk River Watershed Bacterial Reduction grant, recently awarded from the Clean Water Land & Legacy grant program. The purpose of this grant is to identify sources of *Escherichia coli* (commonly referred to as “e. coli”) that may be entering the Elk River, which is currently listed with the State of Minnesota as impaired due to excessive e. coli concentrations. E. coli is a bacteria whose presence may indicate sources of fecal material – including pet waste, livestock manure, leaky septic systems, etc. Priority parcels along the Elk River and tributaries have been identified, and if you reside in these areas you may be eligible for cost sharing opportunities for conservation practices to reduce transport of manure or waste material. The focus of the program will be pasture management, manure management, stormwater runoff, and increasing healthy vegetation on small farms and hobby farms. Upwards of 75% of the costs of a conservation practice could be cost-shared.

Finally, a third program county residents may consider is the State Cost-Share program, administered through Sherburne SWCD. Each SWCD receives funds from the state to implement conservation work. Sherburne SWCD will meet with you to discuss your property’s situation, develop a project to address identified issues, and assist in completing an application for cost-share consideration. Applications are considered on April 1st and August 1st and are ranked for priority. High-scoring applications will address the most concerning locations that are in close proximity to a waterbody or otherwise offer a great environmental benefit or pollutant reduction. Projects may consist of shoreline erosion control, native prairie establishment, shoreline or waterway buffers and filter strips, urban or rural rain gardens, and others. Anywhere from 40% to 65% of cost-sharing may be available, and there is no commitment to the landowner until a project and contract is established. Even if a project does not receive cost-share assistance, the landowner can still often receive technical advice and site designs from the SWCD free of charge.

Sherburne SWCD looks forward to working with county landowners again in 2018 to identify natural resource concerns and provide advice and assistance however possible. Please do not hesitate to contact our office at 763-241-1170 x 4 to discuss these opportunities, as well as our other services we offer.

3rd Annual SWCD Poster Contest

The SWCD will be holding its 3rd annual poster contest for 5th grade students of Sherburne County. The poster contest follows a theme that is selected by the National Association of Conservation Districts (NACD), which differs each year. The theme for 2018 will be Watersheds: Our Water, Our Home. The SWCD staff will present to participating classrooms and speak about watersheds. The students then used this information to create their posters. Monetary prizes were awarded to the 1st - 4th place winners. The 1st place winning student's teacher was also awarded with a monetary prize to be used in the classroom. Last year over 300 students participated in the contest. For more information on the poster contest, *please contact Franny at 763-567-5370.*



Become a Minnesota Tree Care Advisor



Advisor volunteers provide communities in Minnesota with a valuable pool of “tree stewards” that support and enhance our urban and community forests.

Opportunities may include conducting educational programs for youth groups, schools, neighborhood and community groups, or other Master Gardeners. You may be called upon to assist community or neighborhood forestry planning groups by conducting workshops, helping them prepare proposals, reviewing their plans, and helping the public with their tree-related questions by providing information or directing them to resources. There are many exciting urban and community forestry initiatives and programs emerging in Minnesota and especially in the 11-county, Metro region.

For more information on the Tree Care Advocate Program, visit www.mntca.umn.edu.

Board of Supervisors Election

Supervisors play an important role in how our community deals with a wide variety of resource management issues, including water quality, soil erosion, stormwater management, agricultural conservation and land protection.

This year, the Sherburne SWCD has two Supervisor positions up for election. SWCD Supervisors serve four year terms. Candidates appear on the ballot for the general election which will take place Tuesday, November 6, 2018. Individuals who wish to be on the ballot must file for candidacy between May 22, and June 5, 2018.

More information can be found at www.co.sherburne.mn.us. Candidates are elected county wide, but must reside in one of the nomination districts up for election. Nomination Districts up for election this year are District 2 and 4.

District 2 includes: Big Lake Township, Orrock Township

District 4 includes: Clear Lake Township, Becker Township, Palmer Township, Santiago Township

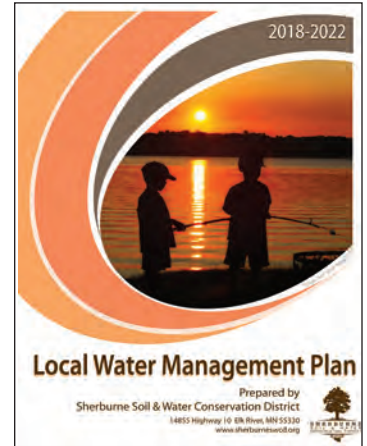


Additional information about the SWCD can be obtained by visiting their web site at www.sherburneswcd.org or calling the office at (763) 241-1170 x 4.

County Water Plan Updated

In a process stretching over a year, Sherburne SWCD has been updating the County's Local Water Management Plan (LWMP). The LWMP is updated every 10 years, and documents the status of lakes, streams, wetlands and their watersheds throughout the county. Through a process which involves local stakeholders, a local advisory committee, and officials from state and local government, approaches to mitigating the county's water concerns are identified. An Implementation Schedule is then defined which specifies how the county will manage our water resources, who will be responsible, how long it will take, and how it will be funded.

A draft version of the Sherburne County LWMP is now complete and is currently being circulated to state government agencies for review. You can read the LWMP by visiting the Sherburne SWCD website at www.sherburneswcd.org/water-management.html. Feel free to contact Dan Cibulka at 763-567-5369 with any questions or comments.



AIS Grant Program



AIS Grant Program Sherburne SWCD

Sherburne SWCD is again this year offering grants and cost-sharing for Aquatic Invasive Species (AIS) projects. Funds are available for lake associations, lake districts, cities, townships, other applicants to address AIS issues on Sherburne County's waterbodies. Appropriate projects would include aquatic vegetation surveys, lake or AIS management plans or AIS control. A new category this year provides incentive payments to groups completing volunteer education activities at public watercraft access points. The deadline for all AIS grant applications is February 1st. More information, including an application can be found on at www.sherburneswcd.org/ais-grant-program.html. Dan Cibulka, SWCD Water Resource Specialist, may be contacted for more information at 763-567-5369.

Free Nitrate Testing

Sherburne SWCD offers free well water testing at the Elk River office. Testing will be available from 8:00 a.m. to 4:00 p.m. Monday – Friday. The SWCD office is located at 14855 Highway 10 in Elk River. Nitrate is a common contaminant found in many wells throughout Minnesota. Shallow wells, dug wells, and wells with damaged or leaking casings are the most vulnerable to nitrate contamination.

To take your sample, run your cold tap for three minutes then collect about one cup of water in a plastic baggie (double bag) or clean jar. Keep the water cool until it is ready to be tested. Water can be collected anytime within one day of testing. Testing will take place on site with results typically available within 5-10 minutes. Test results may remain anonymous. The well water samples will only be tested for nitrate. For more information, contact our office at 763-241-1170 x 4.



Sherburne Soil and Water Conservation District
14855 Highway 10
Elk River, MN 55330
763-241-1170 ext 4
www.sherburneswcd.org



Nature Talks

Sherburne Soil and Water Conservation District

Nature Talks

May 2018

In This Issue

SWCD Tree Sale

COLA Event

Small Farms Night

Small Farm Cost Share

Conservation Intern

Ground Water Info

Firewood Regulations

Wildflower Seeds

Tree Inventory Team

Poster Contest

2018 Tree Sale... It's a Wrap!



The staff at Sherburne County Soil & Water Conservation Districts have a strong belief in the power of trees. Trees have so many benefits; they filter water, prevent erosion, grow food, offer wildlife habitat, provide shade in the summer and keep us warm in the winter with firewood.

For decades the Sherburne SWCD has been providing high quality bare root tree seedlings and transplants to landowners

at a price that makes it feasible to plant multiple row windbreaks, living snowfences, privacy screens or wildlife plantings. affordable, easy, and good for you.

Each Spring our staff spends time sorting, prepping and bundling around 300 orders for the tree sale. This year over 22,000 trees were distributed in Sherburne County. Orders for the 2019 Tree Sale will be accepted on January 1st.

If tree planting is all new to you contact us, our staff is here help you select varieties to meet your objectives and can assist with resources on planting methods and tree protection.

For more information on the Tree Sale or tree planting, please contact our office at 763-241-1170 x 4.

Thank You

to everyone who participated in the SWCD 2018 Tree Sale



Over 22,000 tree seedlings were distributed

They will grow to add beauty and environmental benefits to Sherburne County!



COLA Kick-Off Event & Fundraiser

COLA Kick-Off Event & Fundraiser

Thursday, May 31st

6-8 pm

Lions Community Park

21960 Co Road 5, Big Lake, MN 55309



The Sherburne County COLA (Coalition Of Lake Associations) is hosting a kick-off event and fundraiser Thursday, May 31st. The event will include a youth speaker, lake resource experts, silent auction and free picnic dinner with ice cream bar. All are welcome to attend and have a good time while showing support for Sherburne County's lake, rivers and streams.

RSVP by email to sherburnecola@gmail.com or 763-567-5376.



SHERBURNE
SOIL & WATER
CONSERVATION DISTRICT

1944

Small Farms Night

The Sherburne Soil and Water Conservation District hosted a Small Farms Night in partnership with the U of M Extension on April 3rd. Even with poor weather, 40 attendees came to listen to presentations covering manure composting, pasture management, local ordinances and cost share opportunities. Presenters included Sherburne and Benton District Staff, U of MN Extension and Sherburne County staff. In addition, two local farmers spoke about their operations and experiences. Dinner was provided by The Tipsy Chicken and was enjoyed by all. Small Farms was the kick event for a Clean Water Funds grant managed by the District to improve water quality in Elk River Watershed.

For more information on topics covered during Small Farms Night, please contact Miranda at 763-567-5370.



Cost Sharing Available for Small Farms



Sherburne SWCD offers several programs to assist landowners in reducing bacteria transport to the river.

Sherburne SWCD staff have the experience to help you address all your small farm or hobby farm needs! Site visits and consultations are completed free of charge, as are many technical designs.

Through a grant provided by the State Minnesota's Clean Water & Legacy Amendment, the Sherburne SWCD can now provide up to 75% financial assistance towards projects located in Priority Zones near the Elk River, as determined by recent studies.

Available Programs

Manure Management:

Proper manure management techniques include livestock fencing, composting bins/stalls or other manure storage facilities.

Buffer Strips:

Vegetated buffers may intercept or remove pollutants and sediment in the following percentages from runoff: 50% or more of nutrients and pesticides, 60% or more of some pathogens, and 75% or more of sediment. Deep rooted plants and wider corridors are more effective at protecting water quality and promoting groundwater recharge.

Pasture Management:

Livestock rotation plans, pasture plantings, and tilling plans all help to create healthy pastures that provide good nutrition, physically strengthen soils, and provides good vegetation to retain manure and nutrients during periods of heavy rain.

Stormwater Runoff:

Controlling the flow of water on your property is crucial for reducing bacteria transport and solving erosion problems. Stormwater runoff can be directed with vegetated plantings, French drains, rain gardens, constructed berms, or a variety of other solutions.

For more information please contact Miranda at 763-567-5370.



Conservation Corp Apprentice

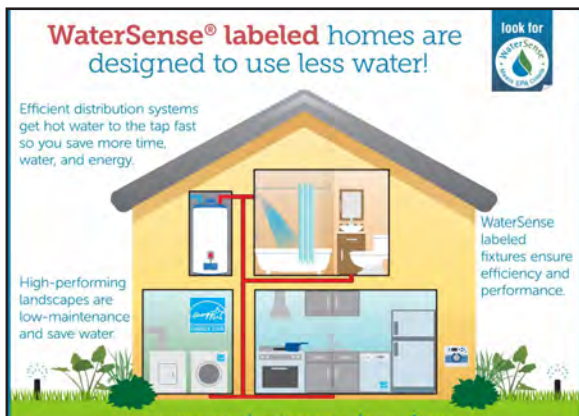
Sherburne Soil & Water Conservation District has once again been selected to host a Minnesota Conservation Corps apprentice to assist with various SWCD programs. This summer our apprentice is Will Anderson. Will recently graduated from Minnesota State University Mankato with a degree from the Parks and Leisure Services program for Resource Management. Will's term of service will run from May through August. During this time he will be working closely with all staff on everything from community tree inventories to water quality monitoring. Will comes to us from Delano, Minnesota. He has a passion for being outdoors and enjoys spending time camping or going on hikes.

Conservation Corps provides hands-on environmental stewardship and service learning opportunities to youth and young adults while accomplishing conservation, natural resource management and emergency response work.

Welcome to the SWCD Team, Will!



Ground Water Conservation



Saving Water and Money through Groundwater Conservation Groundwater is a precious resource for watering lawns, crop irrigation, industrial cooling, recharging our lakes and streams, and providing drinking water for us all. The relatively sandy soils in Sherburne County allow for quick infiltration of water into the soil, meaning groundwater reserves can replenish themselves quickly. Sherburne SWCD is participating in a Campus Groundwater Conservation Protocol development process, which aims to develop a protocol for measuring groundwater use on public campuses in the 11 county metro area and reducing use through conservation

measures. In summer of 2018, SWCD staff will be working with campus officials to conduct a water audit of a public campus. The process is designed to identify areas that public buildings can not only reduce water use, but also save money. Reducing groundwater consumption at home can save you money too!

Here are a few ways in which we recommend you save water at home:

1. When purchasing new appliances, buy ENERGY STAR certified and WaterSense labeled products.
2. Reduce consumption by taking shorter showers and turning off faucets while brushing your teeth, washing dishes or washing hands.
3. Inspect sinks and toilets for leaks; at one drip per second, a faucet can leak 3,000 gallons in a year. Replace as needed.
4. Set up a backyard rainwater collection system or install a rain barrel to collect rain water for lawn irrigation.
5. Replace turf-grass with low maintenance grass, ground cover flowers or other native turf species that are drought tolerant and require less watering and mowing.

Sherburne SWCD staff are available to assist county residents in water conservation practices such as rainwater collection systems or for alternative lawn cover. **Site visits and consultations are free of charge, contact our office at 763-241-1170 x 4.**



New Minnesota Firewood Rules

Campers and other visitors planning to have campfires at state parks, state forests and other public lands managed by the Minnesota DNR need to be aware of new firewood rules beginning this year. New rules were needed, because quarantine boundaries instituted for gypsy moth and emerald ash borer made the former rules problematic.



Firewood approved for use on DNR-managed lands includes:

- Firewood sold at the specific Minnesota state park or recreation area where it will be used.
- Non-ash firewood that was (1) purchased from a vendor and (2) harvested in the same county as the DNR unit where it will be used.
- Firewood that was (1) purchased from a vendor (2) harvested in Minnesota and (3) certified to be pest free
- Additional types of acceptable firewood listed at: www.mndnr.gov/firewood.

One thing to keep in mind is firewood sold at one MN state park or recreation area might not be approved for use at other MN state parks or Rec areas. Check with park staff to determine if any leftover firewood can be taken to any other campgrounds. Also check that the bundle label includes the county of harvest. If the wood is certified, the bundle label will also feature the logo of either the MN Department of Ag or the USDA Animal and Plant Health Inspection Service. Save the receipt, because it will be needed to show proof of purchase and labeled bundles to DNR staff upon request. Individuals bringing non-approved firewood onto DNR lands are subject to confiscation or fines. **For more information, visit www.mndnr.gov/firewood or contact the DNR Information Center by emailing info.dnr@state.mn.us or by calling 888-646-6367.**

Wildflower Seed Mixes

Minnesotans are eager to soak up the sun and get into their gardens to make the most of our short summers. Since many gardener's have heard of the decline in honey bees and other pollinators, flowering plants labeled for pollinators have been flying off the shelves. A relatively inexpensive way to cover a lot of ground with blooming plants is to buy the "wildflower in bag" mixes, this is usually promoted as pollinator friendly and easy to grow.

If we look more closely at the labels the plants found in those bags might not be the best for our area. Some wildflower seed mixes that are purchased at hardware stores and commercial garden centers are for nationwide distribution, this means the plants in them are most likely not native and some can actually be quite invasive if they escape the landscape setting. Conversely since we live in Minnesota with harsh winters, many of the species can't survive and will only last one year – requiring replanting the following year.



Minnesota is very fortunate to have a growing number of native plant nurseries and management companies that not only provide native seed and live plants but they also provide installation and maintenance services. They have knowledge on proper site preparation and plant selection, which are very important components when installing native plant habitat.

The Sherburne SWCD is always happy to help with questions about pollinator habitat and using native plants, feel free to give us a call at 763-241-1170 x 4 to request a site visit!

Join Becker's Community Tree Inventory Team

Do you love trees?

Have you always wanted to learn more about them?

Do you want to do something good for the environment?

In 2013, a Community Tree Survey was conducted in the City of Becker – this process looked at a sample of Becker's trees to get a good, relatively accurate idea of species composition. Becker has 17 parks and public building campuses that are all made more beautiful by the trees that grace their landscape. The SWCD is working with the Parks and Streets departments to inventory all public in your community to enable better tree care and prioritization.



Volunteers will receive professional training on tree identification, tree measurements and data collection. Volunteers will be provided all necessary inventory equipment. Volunteers will work when their schedule allows and will have the support of the SWCD staff.

A training will be held during the week of June 11. A date based will be based on participant availability. **If you are interested, please contact Gina at (763) 567-5360 or ghugo@sherburneswcd.org before June 6.** All interested participants will be polled on their preferred training date and select a day that works for the majority.

In Honor of **MEMORIAL DAY**

We will be closed on Monday, May 28

In honor of all our veterans as well as our active service members.

Thank you for all you do!

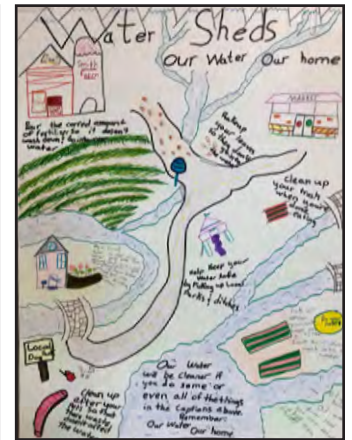
Wishing you a beautiful Memorial Day weekend!



4th Annual SWCD Poster Contest

The SWCD 2018 Poster Contest theme was “Watersheds, Our Water Our Home”. District technician Franny presented to schools in Elk River and Princeton on what makes up a watershed and how we can keep our water clean. She visited Princeton, Elk River, and Becker schools and reached over 300 students. The SWCD received 93 posters from the students, ranging from drawings to paintings, colored pencils to markers and glitter. The students did an excellent job showcasing what they learned from the presentations. During judging, posters were removed that did not meet the criteria. The decision to choose the top placing posters was a difficult one, the winners are shown below. All students who submitted posters will receive a small cone coupon from either Elk River or Princeton Dairy Queen for participating.

1st Place Ella Kenmir
Princeton Intermediate
Mrs. Kluempke's Class



(L to R) District Technician Franny, 1st place winner Ella,
District Manager Francine, Supervisor Nelson



2nd Place Elanor Gruber
Princeton Intermediate Mr. Ruzek



3rd Place Ruthie Raske
Meadowvale Elementary Mrs. Hoff



4th Place Adriana Patullo
Meadowvale Elementary Mrs. Hoff



Special thanks to Dairy Queen of Elk River and Princeton
for donating ice cream coupons to all students who participated in the contest.

Sherburne Soil and Water Conservation District
14855 Highway 10
Elk River, MN 55330
763-241-1170 ext 4
www.sherburneswcd.org



Nature Talks

Sherburne Soil and Water Conservation District

Nature Talks

August 2018

In This Issue

Fair Parade

Tree Inventory

Small Farms Program

Buckthorn Tips

Elk River Clean Up

AIS Camera

Oak Wilt Reminder

Citizen Pruners Needed

Blue Green Algae

Sherburne County Fair Parade



SWCD staff and friends participated in the Sherburne County Fair parade on July 21st. The parade theme this year was Las Vegas. The SWCD float was decorated with 2 large dice and playing cards, all promoting soil health. It was a beautiful sunny morning when the staff walked the parade route handing out icee's, soil health coloring books and I Love Soil stickers. This is the 3rd year the District has participate in the parade.



Community Tree Inventory

Becker Minnesota has 17 parks and public building campuses that are all made beautiful by the trees that grace their landscapes. The SWCD has been collaborating with the Parks and Public Works departments of Becker to inventory all public trees in the community. This enables better tree care and prioritization. Similar efforts have been completed in Elk River in 2017. Volunteers received professional training on tree identification, tree measurements and data collection. Then they were dispatched to community parks in Becker where they mapped, surveyed and observed hazard ratings of the trees. Thank you to all the volunteers who participate!





If there's one constant in farming, it's poop—and a lot of it. A single horse creates 50 pounds of waste per day; a beef cow up to 92 pounds; a sheep 4 pounds; and a laying hen 1/4 pound. As a farmer, responsibly managing your livestock waste is one of the most important actions you can take for the health of your livestock, crops, family, land, water and community. Several portions of the Elk River are currently listed on the Environmental Protection Agency's list of Impaired Waterways due to barnyard runoff from livestock. Under the Small Farms Cost-Sharing program, Sherburne SWCD offers several programs to assist landowners in reducing bacteria transport to the river.

Pasture Management:

[Livestock rotation plans and pasture plantings](#)

These plans all help create healthy pastures which offer good nutrition, physically strengthen soils, and provide good vegetation to retain manure and nutrients during periods of heavy rain.



Buffer Strips:

[Vegetated buffers](#)

Vegetated buffers work to remove sediment, organic matter and other nutrients, from runoff water by slowing down the water and allowing those materials to settle out and water to soak into the soil.



Stormwater Runoff:

[Vegetated Plantings, French Drains, Raingardens, Constructed Berms](#)

These practices help direct the flow of water on your property away from manure and bare soil.



Manure Management:

[Livestock fencing, composting bins or other manure storage facilities](#)

Manure Management protects surface water quality by reducing nutrient and sediment runoff, it also helps protect air quality by controlling odors.

Sherburne SWCD staff have the experience to help you address all your small farms or hobby farm needs! Site visits and consultations are completed free of charge, as are many technical designs. Through a grant provided by the State of Minnesota's Clean Water, Land & Legacy Amendment, the Sherburne SWCD can now provide up to 75% financial assistance towards projects located in Priority Zones near the Elk River.

Contact Miranda or Dan today to see if you qualify!

763-241-1170 x 4 mwagner@sherburneswcd.org dcibulka@sherburneswcd.org

Got Buckthorn?

Buckthorn is one of the most invasive species found in Minnesota. Buckthorn leafs out early and retain leaves late into the fall creating dense shade that helps it out-compete many native plants.

Why is buckthorn such a problem?

- Out-competes native plants for nutrients, light, and moisture
- Forms an impenetrable layer of vegetation
- Threatens the future of forests, prairies, and other natural habitats
- Contributes to erosion by shading out other plants
- Lacks “natural controls” like insects / disease that would curb its growth

Ways to prioritize management:

- Remove trees with fruit first
- If you have areas with relatively few buckthorn trees, start your management there.
- Then work towards the areas that are more heavily infested.
- Continue to follow-up in the areas where you have previously removed buckthorn.



The most effective time to cut and chemically treat the stumps is in late summer and throughout the fall. Avoid treating buckthorn in May and June when the tree is putting out leaves as the herbicide will be less effective at this time then during the rest of the year.

For questions about Buckthorn please contact Franny 763-241-1170 x 4 fgerde@sherburneswcd.org.

Elk River Clean Up

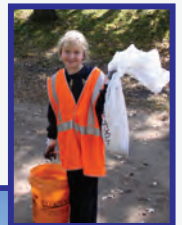


Elk River Clean Up

Join us!

Saturday, October 6th
9am-11am

Register today by contacting Franny at
fgerde@sherburneswcd.org or 763-241-1170 x 4
Meeting Location: Lakeside Park in Big Lake



Great activity for groups and families

New AIS Cameras

Users of the Big Lake water access at Lakeside Park in the City of Big Lake may notice a new piece of equipment and signage there. Recently, the City of Big Lake, Big Lake Community Lakes Association (BLCLA) and Sherburne SWCD have teamed up to place monitoring cameras at this water access to help prevent the spread of aquatic invasive species. Called an “I-LID”, this is a self-contained, solar powered camera that prevent AIS transport through video capture and audio education. Movement triggers a camera to begin capturing images while also beginning a pre-recorded message, which reminds the boater to inspect their watercraft and trailer for aquatic plants or animals prior to entering or exiting the lake. The images are reviewed by a third party and potential violations of Minnesota’s AIS transport law are reported to local authorities for follow-up. “The BLCLA is very



encouraged by the reports from the new I-Lids video monitoring system installed at Lake Side Park Monday July 16. There have been 1205 videos captured and reviewed along with 301 launches counted through the end of July. And the good news is there have been no violations to date. Many of the videos show people looking at the device, reading the posted signs and stopping to listen to the recorded messages. These are all good indications that there is increased awareness and hopefully will continue to encourage boaters to act responsibly knowing they are being monitored. We’re

looking forward to 2 additional I-Lids systems being installed – another one at Lake Side Park and one at the Mitchell Lake landing.” Karna Lundquist, Vice President, BLCLA. This tool was heavily favored amongst lake residents and the Big Lake City Council amongst alternatives due to its ability to monitor and educate 24 hours a day, 7 days a week. Sherburne SWCD partnered with the City and BLCLA to assist in equipment purchasing and signage development, and will later on collaborate on a one-year report outlining the experiences with this innovative approach towards AIS Prevention. “We are thrilled to have the I-Lid systems to protect our lakes! The City utilized money from the Michelob Celebrate Your Lake Grant and partnered with the Soil and Water Conservation District, Sherburne County and the Big Lake Community Lakes Association. The I-lid system allows us to constantly monitor boats entering the lakes without paying someone to be on site. Big Lake takes both the quality of our lakes and responsible spending seriously, and the I-Lids systems are a great balance between those two priorities!” Raeanne Danielowski, Mayor, City of Big Lake.

Oak Wilt Reminder



Oaks can become infected during the Low Risk period, but the probability is very low. However, since it could happen, it’s best to delay pruning of the oaks until the Safe period or to quickly seal the pruning wounds with shellac or paint to avoid attracting the Nitidulid beetle (which can spread the fungus that causes oak wilt). if pruning during the Low Risk period is unavoidable. During the Safe period, there is virtually no risk that an oak can become infected with oak wilt by over-land transmission of the fungus.

For questions about Oak Wilt, contact Gina Hugo 763-241-1170 ext. 4 or ghugo@sherburneswcd.org

Citizen Pruner Program

If you enjoy being outdoors, love trees and your community, this is an opportunity you need to check out!

Sherburne SWCD and the cities of Becker, Big Lake, Clear Lake, Elk River, Princeton and Zimmerman are partnering with the U of M Minnesota Tree Care Advocate Program on a pilot program that engages citizens in caring for their community forestry. Citizen Pruner volunteers have gathered at several city parks and facility locations to assist with basic tree pruning needs since 2014. They are trained in small tree structural pruning, and during events scheduled throughout the year help maintain trees on publicly-owned property. A healthy urban forest plays a vital role to the health of all cities. Trees improve air and water quality, lower air temperatures, reduce energy demand, and beautify the streets. CitizenPruners provideatremendousbefittooururbanenvironment.



Citizen Pruner's are trained in tree identification, biology, and pruning techniques.

Tree pruning requires not only an understanding of how to prune but also an understanding of the tree's biology to prevent the spread of certain diseases.

Date: Saturday, October 13th

Time: 9:00am - 3:00pm

Cost: \$25 per person

Course material will be taught by U of M Urban Forestry Department staff.

For training registration information, visit <http://www.mntca.org/mcp-sherburne/> or contact Gina Hugo at the Sherburne SWCD: 763-241-1170 ext. 4 or ghugo@sherburneswcd.org

Starry Trek 2018

On Saturday, August 18th, the second annual Starry Trek took place at Lakeside Park on Big Lake. This is the second year the University of Minnesota has coordinated the event for lake groups and SWCD's across the state. A group of 14 volunteers dedicated their time to search for starry stonewort, Minnesota's most recent aquatic invasive plant. SWCD Water Resource Specialist, Dan Cibulka, spent time teaching the group the individual characteristics of both native and invasive species of aquatic plants they might encounter. Volunteers were sent to 10 lakes across the county to hunt for the dangerous Starry Stonewort. Fortunately, no new infestations of the invasive plant were found in Sherburne County.



District Manager Graduates From Statewide Leadership Program

The Sherburne Soil and Water Conservation District (or BWSR or NRCS) is proud to congratulate Francine Larson, District Manager for successfully completing a one-year leadership development program sponsored by the Minnesota Association of Soil and Water Conservation Districts (MASWCD).

The 2017-2018 MASWCD Leadership Program brought together 32 participants from across the state to strengthen their leadership capacity for conservation work in Minnesota. The group was comprised of locally elected Soil and Water Conservation District supervisors, local SWCD staff, staff from the Minnesota Board of Water and Soil Resources, and regional staff from the Natural Resources Conservation Service.



District Manager Francine Larson, Pictured Front Row, 4th from left.

The group met for seven multi-day sessions to study and practice leadership topics including: building personal leadership skills, the leader-follower relationship, developing a vision, practicing ethical leadership, strengthening team leadership, facilitation as a leadership skill, and working with stakeholders in public issues.

This was the eleventh group to complete the statewide leadership program; more than 225 SWCD staff and supervisors have completed the program since 1996. The content is designed and delivered by current and former staff of the University of Minnesota Extension. For further information about the MASWCD Leadership Institute, contact the Minnesota Association of Soil and Water Conservation Districts at 651-690-9028 or visit the MASWCD website at www.maswcd.org.

The Sherburne Soil & Water Conservation District (SWCD) is dedicated to working directly with landowners and agencies in order to promote the wise and sustainable use of our land and water related resources; to educate and inform the public about these uses; to help solve the resource problems within the District and to serve as a county wide natural resource information and referral center.



2017-2018 MASWCD Leadership Program participants.

Blue-Green Algae

Blue-green algae are not algae at all, but types of bacteria called cyanobacteria that are normally present in many lakes. This type of bacteria thrives in warm, nutrient-rich water. When conditions are right, the bacteria can grow quickly forming “blooms.” Blue-green algal blooms are often described as looking like pea soup or spilled green paint. However, blooms aren’t always large and dense and can sometimes only cover small portions of the lake.



You can become sick if you swallow, have skin contact with, or breathe in airborne water droplets while drinking, swimming, boating, waterskiing, tubing, bathing, or showering in water that has harmful algae. If you become sick, you might experience vomiting, diarrhea, rash, eye irritation, cough, sore throat, and headache. Symptoms can begin hours or up to two days after exposure.

Pets, especially dogs, are susceptible to harmful algae because they swallow more water while swimming and doing activities like retrieving a ball from the water. They are also less deterred by green, smelly water that may contain harmful algae. Animals can experience symptoms within minutes of exposure to the toxins. Symptoms they might experience include vomiting, diarrhea, weakness, difficulty breathing, and seizures. In the worst cases, animals have died. If your pet shows symptoms after exposure to algae, contact your veterinarian.

We can’t eliminate blue-green algae from a lake, it is part of the overall lake community. What we can do is control the overall intensity and the frequency of algae blooms. Since we can’t control the water temperature, the best thing we can do is reduce the amount of nutrients getting into the lake. We can do this by reducing the amount of phosphorus and nitrogen from man-made sources such as lawn fertilizer, and runoff from cities, farm fields and other sources. The reduction of nuisance algal blooms will not be immediate, but it is the best long-term solution to minimizing the frequency and intensity of algal blooms.

For questions about Blue-green algae or to report Blue-green algae on a waterbody in Sherburne County, please contact Dan 763-241-1170 x 4 dcibulka@sherburnswcd.org.

Naturally Funny



What do you call a tree with lots of friends?

– Poplar



In observation of
Labor Day
Our office will be closed
Monday, September 3, 2018

Sherburne Soil and Water Conservation
District
14855 Highway 10
Elk River, MN 55330
763-241-1170 ext 4
www.sherburneswcd.org

